

Wyoming State Plan for The Emergency Alert System

EAS Plan
Revised November 2008

Table of Contents

SIGNATURES OF APPROVAL AND CONCURRENCES	4
PURPOSE	5
INTRODUCTION.....	5
AUTHORITY	5
ASSUMPTIONS.....	5
DEFINITIONS	6
OPERATION OF THE EMERGENCY ALERT SYSTEM.....	8
National-level EAS	8
State-level EAS.....	8
Local-level EAS.....	9
Weather EAS	9
PROCEDURES FOR PUBLIC OFFICIALS	9
PROCEDURES FOR BROADCAST AND CABLE MEDIA.....	11
MEDIA EAS ACTIVITIES	12
MEDIA RESPONSIBILITIES.....	12
TESTS	
Required Weekly Test (RWT)	13
Required Monthly Test (RMT).....	13
Wyoming EAS Scripts and Formats	16
AUTHORITY TO ACTIVATE THE WYOMING STATE EAS SYSTEM	17
NATIONAL ACTIVATION EAS CHART.....	18
STATE LEVEL EAS CHART	19
LOCAL LEVEL EAS CHART.....	20
NATIONAL WEATHER RADIO AREAS (With attachment).....	21
WYOMING EAS OPERATIONAL AREAS AND LP-1 STATIONS	22

EAS HEADER CODE ANALYSIS	23
WYOMING ORIGINATOR CODES.....	24
WYOMING “L-CODE” FORMATS	24
Broadcasters	24
Cable TV	24
Weather Service Offices	25
Civil Authorities	25
FCC Event Codes.....	26
State of Wyoming County Codes.....	27
WYOMING OPERATIONAL AREA SECTIONS.....	28
Natrona/Converse Operational Area.....	28
Laramie Operational Area.....	29
Sheridan/Johnson Operational Area	30
Sweetwater Operational Area	31
Albany/Carbon/Platte/Goshen/Niobrara Operational Area.....	32
Campbell/Crook/Weston Operational Area.....	33
Fremont Operational Area	34
Hot Springs/Washakie Operational Area.....	35
Park/Big Horn Operational Area.....	36
Uinta/Lincoln/Sublette Operational Area	37
Teton Operational Area.....	38

**Signatures of Approval and Concurrence:
Approval/Concurrence:**

Approved:

Wyoming Office of Homeland Security
Joe Moore

National Weather Service
John Griffith

FCC Enforcement Bureau
David Solomon

Wyoming Association of Broadcasters
Laura Grott

WYOMING STATE EMERGENCY ALERT SYSTEM (EAS) PLAN

Purpose

The purpose of this plan is to provide procedures for statewide activation of the Wyoming State-Level Emergency Alert System (EAS).

Introduction

These procedures were prepared with the help of the Wyoming Office of Homeland Security, National Weather Service, Emergency Operational Centers, Wyoming Association of Broadcasters, State Cable systems, and state and local officials of the State of Wyoming. This plan provides the necessary means and operating procedures for designated state and federal officials to issue emergency information and warning to the general public of Wyoming. Because of the existing commercial and public broadcast coverage Wyoming viewers and listeners will be able to receive emergency information in a timely and concise manner.

Acceptance of or participation in this plan shall not be deemed to prohibit a licensee of cable operator from exercising their independent discretion and responsibility in any given situation. The Federal Communications Commission Rules and Regulations provide station management to use discretionary exercise regarding the transmission of emergency messages to the general public. Broadcast stations and cable systems originating emergency communications shall be deemed to have conferred rebroadcast authority as specified in FCC Rules Section 11.54.

Detailed procedures, agreed upon by the broadcast and cable industries and the local County Emergency Operational Centers, which will permit designated government officials to issue local emergency messages and instructions, via EAS in threatened or actual emergencies, will be published as Local Operational Area Plans.

Authority

Title 47 U.S.C. 151, 154(1) and (o), 303(r), 524(9) and 606; and 47 C.F.R. Part 11, FCC Rules and Regulations, Emergency Alert System (EAS) as pertains to day-to-day emergency operations

Assumptions

The listening and viewing habits of the public are inherent factors of consideration and are conducive to the positive effectiveness of the Wyoming EAS. In times of emergency or crisis most people by instinct or habit will turn on his or her radio or television receiver. However, continued public education is required to assure the public that the broadcast medium is the established method of distributing emergency information from local, state and national sources.

All participating broadcast stations and cable media will monitor NOAA Weather Radio, if possible, as a secondary or “other” assignment. If unable to monitor an assigned input the SECC will work with the station to find an input that is both receivable and suitable. This is NOT a final draft, but should be considered a living, working document. As conditions within the broadcast community and state change so should the document.

All LP-1 stations should have the capability of monitoring at least three audio inputs; 1) Wyoming Public Radio (where available), 2) NOAA Weather Radio, and 3) the local government activation source.

The State of Wyoming has eleven Operational Areas.

The basic monitoring assignments will be as stated in each of the local operational areas.

Definitions

Emergency: A situation posing an extraordinary threat to the safety of life and property. Examples are, but not limited to natural situations such as: floods, heavy snow, high winds, icing conditions, widespread fires, discharge of **hazardous materials**, tornadoes, widespread power failures, industrial explosions, and civil disorders,

Designated Government Officials: The person or persons designated by governments signatory to this procedure to request activation of the EAS and to make emergency announcements.

EAS Designations: These are the FCC's EAS Station Designations reflecting the EAS status of every broadcaster and cable operator. Consult the FCC Mapbook.

National Primary (NP) - Source of all national EAS Alerts. This station will be monitored by designated LP stations.

State Primary (SP) - A primary source of EAS State programming which can originate with the governor or designated representative, such as a state's emergency operations officer. (WOHS)

State Relay (SR) – Will primarily be provided by National Weather Service. Future state relay options would possibly include the following: satellite service, Wyoming Public Radio and Wyoming Public Television. They will relay those state EAS Messages that are received from the Wyoming Office of Homeland Security; when and if they become involved. They can also relay national, local, and weather alerts to those areas where no other means is available.

Local Primary (LP-1) - The local broadcast station in a defined operational area that is designated the primary station to transmit EAS messages. LP-1 stations are primarily sources of Local Area Emergency EAS Messages. They can also relay national, state, and weather alerts.

Local Primary (LP-2) - The local broadcast station in a defined operational area that is designated as the backup to the LP-1 Station in some operational areas. LP-2 stations are secondary sources of Local Area Emergency EAS Messages. They can also relay national, state, and weather alerts.

Participating National (PN) - Most normal broadcasters and cable operators are designated as "PN". These sources are for delivering all levels of EAS to the public.

Non-Participating National (NN) - Broadcasters who hold a NN Authorization from the FCC to sign off the air during a National Emergency.

Emergency Operation Center (EOC) - (State, County, City. etc.) A specifically designed and designated facility within a jurisdiction used for Emergency Operations.

National Warning System (NAWAS) - A dedicated Homeland Defense telephone system, accessible from specific Local Area Control Point (LACP) and Weather Service officials, the Wyoming Highway Patrol and Wyoming Office of Homeland Security in the State of Wyoming.

National Oceanographic and Atmospheric Administration (NOAA) - NOAA Weather Radio stations are encoding their alerts with the coding that is used for EAS. Broadcasters and cable operators can feed their EAS Decoders with the audio from any normal NOAA Weather Radio receiver, and their EAS Decoder will react just as it does with broadcaster EAS codes.

Local Area Control Point (LACP) - At least one EOC Center with 24-hour answering point, with NAWAS in each area should ultimately have an EAS Encoder to send local alerts to the Area LP-1 station, and all other broadcasters and cable operators that want to receive it directly. If an EAS encoder/decoder cannot be procured, a manual call to the LP-1 will be used until such time as it can be implemented at a future date.

WYOMING STATE EAS OPERATIONAL PLAN

Operation of the Emergency Alert System

National Level EAS

In a national emergency, the White House directs activation of the Emergency Alert System (EAS) to provide the President with a means of addressing the public on very short notice. The activation is accomplished by disseminating an Emergency Action Notification (EAN) message via a dedicated network relaying information to control points of the national Primary Entry Point (PEP) network. In addition, radio and TV broadcast networks, telephone common carriers, Associated Press (AP) and United Press International (UPI), are voluntary participants. Non-participating national stations (NN) so designated by the FCC must go off the air. Participating National Stations (PN) and cable systems will continue as outlined in the appropriate checklist and Part 11 of the FCC Rules and Regulations until receipt of an Emergency Action Termination (EAT) message, at which time all stations will resume normal broadcasting. Stations originating emergency communications shall be deemed to have conferred rebroadcast authority (see Appendix C).

State-Level EAS

The Wyoming EAS is activated by a request from authorized officials to the State's EAS State Primary (Wyoming Office of Homeland Security - WOHS). Local Primary sources in the local EAS area should monitor dissemination of state levels emergency information to all other stations, cable systems and the public.

Activation of the State-Level EAS will be from the following::

Governor

Officer-on-duty, Wyoming Office of Homeland Security

NWS offices with county warning responsibility in Wyoming (pg. 17)

Activation of the State-Level Amber Alert will be by those officials listed as follows:

Division of Criminal Investigation, Officer on Duty.

Local-Level EAS

Activation of the Local EAS will be by the National Weather Service or officials as designated in the Local Operational Area Plan. Normally, the request would be made by the PSAP (Public Safety Answering Point or NAWAS Warning Point), or directly to the Local Primary (LP1) source serving the affected area(s).

Upon receipt of an (Local) Area EAS request for activation, all broadcast stations and cable systems, which are voluntarily participating, may conduct, at the discretion of management, operations in accordance with the provisions of the State EAS or operational area plan. EAS may be activated for day-to-day emergencies posing a threat to life or property. For unique emergency situations involving local areas, authorities may request EAS activation through the Local Activation of the State-Level EAS will be from the following:

Governor
Director, Wyoming Office of Homeland Security
EOC Center in the Local Area
NWS offices with county warning responsibility in Wyoming (pg. 17)
Primary (LP) source serving the affected EAS local area.

Weather EAS Procedures

Each NWS office with county warning responsibility in Wyoming will provide EAS activation for specific weather alert messages. These messages are mainly of a WATCH, WARNING or ADVISORY nature (e.g. tornado, severe thunderstorm, flash flood, winter storm, etc.). In addition, NWS offices can provide EAS activation for authorized messages from designated officials listed in this plan.

Dissemination of authorized messages will be directly through NWS NOAA Weather Radio broadcasts and EMWIN (Emergency Manager Weather Information Network).

For unique emergency situations involving local areas, authorities at the county emergency operation center (EOC) may request EAS activation through the LP1 and LP2 stations serving the affected EAS local area.

Procedures for Public Officials

Upon receipt of a state or operational level activation request, all broadcast stations and cable systems may conduct, at the discretion of management, operations in accordance with the provisions of the Wyoming State EAS Plan. Day-to-day emergencies posing a threat to the safety of life and property which would cause activation of the state level EAS include, but are not limited to, floods, heavy snow, high winds, icing conditions, widespread fires, discharge of toxic gases, tornadoes, widespread power failures, industrial explosions, Child Abduction Emergencies and civil disorders. In some instances, a state level EAS activation will be issued through the NWS, from the State Primary, which is the state emergency operations center in Cheyenne, Wyoming (WOHS). WOHS will then relay the alert by telephone to the all county EOCs by phone/NAWAS for distribution to LP-1s.

Interim Activation: When the State WYSOC (WOHS) issues an EAS message from the state emergency operations center, the message will be relayed to National Weather Service. Designated officials will use the following format when contacting the key station(s):

“This is _____ of _____. I request that the Emergency Alert System be activated in the State of Wyoming” (Followed by a description of emergency situation).

When the authorized person requests activation of the Wyoming State EAS System, they should provide the following information.

_Who the requesting official is.

_A call back request, using a number previously provided to the control point or other established authentication procedures.

_Broadcast details (i.e., live, recorded; immediate or delayed). Program material should be provided covering the following points:

_What areas are involved, or the entire state.

_Situation summary (describe the nature of the emergency).

_Action taken by local governments.

_Instructions or messages to the public.

(An authorized public official may also activate the EAS through the NWS alerting system.)

Procedures for Broadcast and Cable Media

Upon receipt of a request to activate the EAS at the state level or operational level by civil authority, the operator at the State Primary Source will authenticate and begin recording, if necessary, all emergency messages and proceed as follows:

1. Broadcast the following announcement:

“We interrupt this program to provide the following emergency instructions.”

2. Transmit the Emergency Alert System header codes and Attention Signal (see Appendix H).

3. Broadcast the following announcement and broadcast the emergency material:

“We interrupt this program to activate the Emergency Alert System in the State of Wyoming at the request of _____. The emergency situation is _____ and affects (entire state, portion of state).”

Repeat nature of emergency to allow time for other broadcasters to respond.

4. Broadcast the emergency information or common program as received from the activating official. Include the source of information and the time received.

5. Repeat as necessary.

6. When received, broadcast Emergency Action Termination by making the following announcement:

"This concludes emergency programming under the Wyoming State Emergency Alert System. All broadcast stations and cable systems may now resume normal operations."

*Actions 3 through 6 should be less than 2 minutes from receipt of message.

7. Send the End of Message (EOM) code (FCC Regulations, Sec. 11.31).

8. Log or record all activity of the EAS system per FCC Regulations (Sec.11.55).

Each broadcast station and cable system, upon receipt of a State Level or operational level emergency action notification will perform, at the discretion of management, the same procedures outlined above. The emergency information may be automatically or manually rebroadcast (FCC Rules, Sec II.51k) from the monitored source or the information may be presented by station personnel.

Television stations shall transmit a visual message containing the Originator, Event, Location, and valid time period of an EAS message. If the message is a video crawl, it shall be displayed at the TOP of the television screen or where it will not interfere with other visual messages. (Requirements for cable systems are outlined in FCC rules, Sec. 11.51g.)

Broadcasters and cable systems have the option of transmitting only the EAS header and EOM codes without the attention signal and emergency announcement. This is acceptable to quickly relay EAS coded messages through areas unaffected by the emergency.

Media EAS Activities

Monitor the primary station designated as the LP-1 (see Appendix B to Appendix I) for your Operational Area for receipt of any further instructions. When possible, monitor the NOAA Weather Radio frequency serving your area. Where NWR reception is not possible, monitor the state relay network. LP-1 stations should monitor NWR and a State Primary or State Relay frequency and a local public safety frequency, when it is assigned.

Media Responsibilities

The State Primary, State Relay and LP-1 stations should monitor the NP/SP/NOAA All-Hazards Radio to provide the required national EAS link to the system.

A procedure should be developed by the stations for discontinuing normal operations and broadcasting the alert message, live or recorded either automatically or manually as permitted in the rules (FCC rules, Sec. 11.51)

After receiving notification of the termination of the State-level EAS, participating media may resume regular operations in accordance with their authorization (see EAS Checklist). During emergencies, operation outside normal parameters is allowed. Such operations should be logged.

Each station should ensure that required EAS equipment is properly installed and programmed with appropriate event codes.

Tests

Assure that EAS equipment is operating properly.

1. All stations are required to record information relevant to all EAS tests (FCC rules, Sec 11.61); AM stations should refer to 73.1250.
2. All stations (except Class D FM and Low Power television) must transmit, once a week at random days and times, a Required Weekly Test (RWT) consisting of EAS Header Codes and EOM codes.
3. All stations must transmit a required monthly test (RMT) consisting of EAS Header Codes, Attention Signal, Test Script, and EOM code within 60 minutes of receipt of a test from a Local or State Primary source (Class D FM and Low Power TV transmit only the test script).

Tests of State Emergency Alert facilities, as coordinated between the Wyoming SECC Chair and state officials, shall be on a random or scheduled basis from a point, which would originate the common emergency program.

4. The following requirements regarding both RWTs and RMTs apply to all cable operators and all broadcasters, "PN", as well as "NN" stations. Even stations that have elected not to participate in local EAS alerts, must still rebroadcast their local RMT every month. There are two exceptions to these rules. First, Class "D" FM and LPTV stations need not have an EAS Encoder. They must have an EAS Decoder. Thus, these stations are exempt from running the weekly digital code RWT test. However, they must retransmit monthly RMT tests as outlined below, minus the EAS Header Codes and Attention Signal. In addition, LPTV stations must present all EAS information visually, just as all other TV stations must do. The second exception is for FM Translator and TV Translator stations, which are not

required to have any EAS equipment.

Required Weekly Test (RWT)

1. **Transmission:** All broadcasters and cable operators must transmit an RWT once each week at random days and times except for the week of the RMT test. There are no time-of-day restrictions. This is a 10.5-second test, consisting only of the EAS Header and End-of-Message Codes.
2. **Reception:** All broadcasters and cable operators receiving a RWT from one of their monitored sources must log receipt of this test from their one or two required monitored sources. No further action is required.

Required Monthly Test (RMT)

1. **Transmission:** RMTs are to be initiated by the SR, and LP-1 and LP-2 stations. During some months, the test will actually be initiated by the 911-Center or Emergency Operation Center associated with these stations in this State Plan. During the designated week for this test, all other broadcasters and cable operators are to wait for this test and then react as described in (4.) below. These tests shall always use the Event Code “RMT”, never codes such as “State Test”, or “Local Area Test”, etc.
2. **Scheduling of RMTs / Week and Time-of-Day:**
 - RMTs shall always occur during the first, full, Sunday-thru-Saturday week of the month.
 - Time frame and origination of the RMT tests shall adhere to the following format:

MONTH	TIME FRAME	STN.	ORIGINATING SOURCE
JANUARY	DAY / 8:30 AM to Local Sunset	LP	LP-1
FEBRUARY	NIGHT / Local Sunset to 8:30 AM	LP	LP-1
MARCH	DAY / 8:30 AM to Local Sunset	LP	LP-1
APRIL	NIGHT / Local Sunset to 8:30 AM	LP	LP-1
MAY	DAY / 8:30 AM to Local Sunset	LP	LP-1
JUNE	NIGHT / Local Sunset to 8:30 AM	LP	LP-1
JULY	DAY / 8:30 AM to Local Sunset	LP	LP-1
AUGUST	NIGHT / Local Sunset to 8:30 AM	LP	LP-1
SEPTEMBER	DAY / 8:30 AM to Local Sunset	LP	LP-1
OCTOBER	NIGHT / Local Sunset to 8:30 AM	LP	LP-1
NOVEMBER	DAY / 8:30 AM to Local Sunset	LP	LP-1
DECEMBER	NIGHT / Local Sunset to 8:30 AM	LP	LP-1

NOTES:

LP = Test will come from the Local Primary station that you monitor.

Wyoming STATE EOC = The State EOC will send the RMT at its discretion.
The LP and PN stations must then rebroadcast this test within 60 minutes of receiving it.

3. Scheduling of RMTs/Recommended Time Constraints:

LP stations, and the State EOC are requested to use judgment in the scheduling of times for RMTs. Since all broadcasters and cable operators are required to rebroadcast this test within 60 minutes of receiving it, care should be taken to not put undue hardship on TV broadcasters in particular, when they are carrying their highest-revenue programming. On a daily basis, these periods would include all major newscasts: early morning, noontime, evening, and late evening. In addition, the times of major events are recommended to be avoided, such as: pre-planned Presidential speeches, hours of a major national or local news story carried outside of normal newscast hours, local and national election coverage, and major sporting events like World Series games and the Super Bowl.

Broadcasters and cable operators who have a complaint regarding the scheduling of RMTs in their area should make their concerns known to their area Chair (see “The Wyoming SECC” section in this Plan for names). If a satisfactory resolution is not reached at that level, the State EAS Chairs should be contacted.

4. Reception/ re-transmission of RMTs

All broadcasters and cable operators receiving an RMT test must re-transmit this test within 60 minutes of receiving the test. [For Daytime-only stations receiving nighttime RMT, this test must be re-transmitted within 60 minutes of the Daytime-only station’s sign-on.] Transmission of this RMT test takes the place of the Required Weekly Test (RWT). Times should be logged for both the receipt and re-transmission of the RMT test. Broadcast and cable management should impress upon their staff that re-transmission of this test is not an option. It is a FCC violation to fail to re-transmit this test within 60 minutes of receiving it. The best policy may be to set your EAS unit for a 60-minute automatic countdown upon receiving an RMT. If the operator on duty does not send the test manually within that window, the box will do it for him when time runs out. If it is not possible to retransmit the RMT upon sign on, transmit an RWT in place of the RMT. As there are several LPs in the state monitoring stations outside of their Operational Area there is an exception to this rule. A RMT received from outside your Operational Area does not need to be forwarded. It should be properly logged and a comment that it is outside of the stations Operational Area should be made in the log.

5. Time-Duration and County-Location Codes to be used

TIME-DURATION codes used in the EAS Header Code for all EAS Tests shall be 30 MINUTES.

COUNTY-LOCATION codes used in the EAS Header Code for EAS Tests shall conform to these guidelines:

6. Miscellaneous

SP & SR Stations: All tests, RWT and RMT, shall use the Location Code for the entire state.

LP Stations: All tests, RWT and RMT, shall include the Location Code for all counties in that LP station's Local Area of responsibility. To determine the counties in their Local Area of responsibility, each LP station should consult the "Boundary Map of Wyoming EAS Local Areas", and/or the cover sheet for the "FCC Mapbook", both found in the Appendix of this Plan. Under the new EAS Plan, some counties have been moved compared to the old EBS Plan. Please read carefully.

PN and NN Stations and Cable Operators: RMT tests shall be re-transmitted unchanged, except for the "L-Code". Thus, RMTs will include all counties present in the original message. For the RWT originated each week by each PN and NN station, and each cable operator, the county-location code used shall be the county for the broadcaster's City of License, or cable operator's Community of License. Other counties in the station's/system's service area may be added at management discretion.

Wyoming EAS Test Scripts and Formats

The following test scripts and formats shall be used by all Wyoming broadcasters, cable operators, and emergency agencies when originating EAS tests.

1. RWT: No script is used for the RWT. Entire test takes 10.5 seconds. Format is as follows:
 - Stop regular programming
 - one-second pause
 - Send EAS Header Code 3 times
 - one-second pause
 - Send EAS End-of-Message Code 3 times
 - one-second pause
 - Resume normal programming

2. RMT: LP stations and emergency agencies originating this test should use the following format. All other broadcasters and cable operators will receive the test in this format, and must re-transmit it within 60 minutes in the same format. Format is as follows:
 - Stop regular programming
 - Optional Intro: **“This is a test of the (Local Area) Wyoming Emergency Alert System.”**
 - one-second pause
 - Send EAS Header Code 3 times (All sources must use Event Code “RMT” for this test.)
 - one-second pause
 - Send EAS Attention Signal (8 seconds)
 - Read Test Script: **“This is a test of the (Local Area) Wyoming Emergency Alert System. In the event of an emergency, this system would bring you important information. This test is now concluded.”**
 - one-second pause
 - Send EAS End-of-Message Code 3 times
 - one-second pause
 - Resume normal programming

Timing Note: The script above can be read in 9-10 seconds. All other elements of the RMT (the Header Codes and an 8-second Attention Signal) take from 19-21 seconds to complete (that length depending on the number of county codes contained in the Header). The goal of writing this short script was to fit the entire test into a 30-second time period. LP stations and emergency agencies should make every attempt to complete this test within 30 seconds. Pre-recording the script at the length needed to achieve this goal would probably be helpful.

Script Note: (Local Area) = LPs: Use the name of your Local Area found in Appendix I. SPs use the phrase, “State of Wyoming”.

LIST OF THOSE WITH THE AUTHORITY TO ACTIVATE THE WYOMING STATE EAS SYSTEM

GOVERNOR

Dave Freudenthal(307) 777-7434

DIRECTOR, WYOMING OFFICE OF HOMELAND SECURITY

Joe Moore.....(307) 777-4900

METEOROLOGIST-IN-CHARGE, NATIONAL WEATHER SERVICE

John S. Eise, Cheyenne (307) 772-2468 ext. 642

Kevin P. Lynott, Riverton(307) 857-3898 ext. 642

Larry Dunn, Salt Lake City, UT(801) 524-4378 ext. 222

David M.Carpenter, Rapid City, SD(605) 341-9271

Keith Meier, Billings, MT(406) 652-0851

WARNING COORDINATION METEOROLOGISTS, NATIONAL WEATHER SERVICE

John R. Griffith, Cheyenne(307) 772-2468 ext. 726

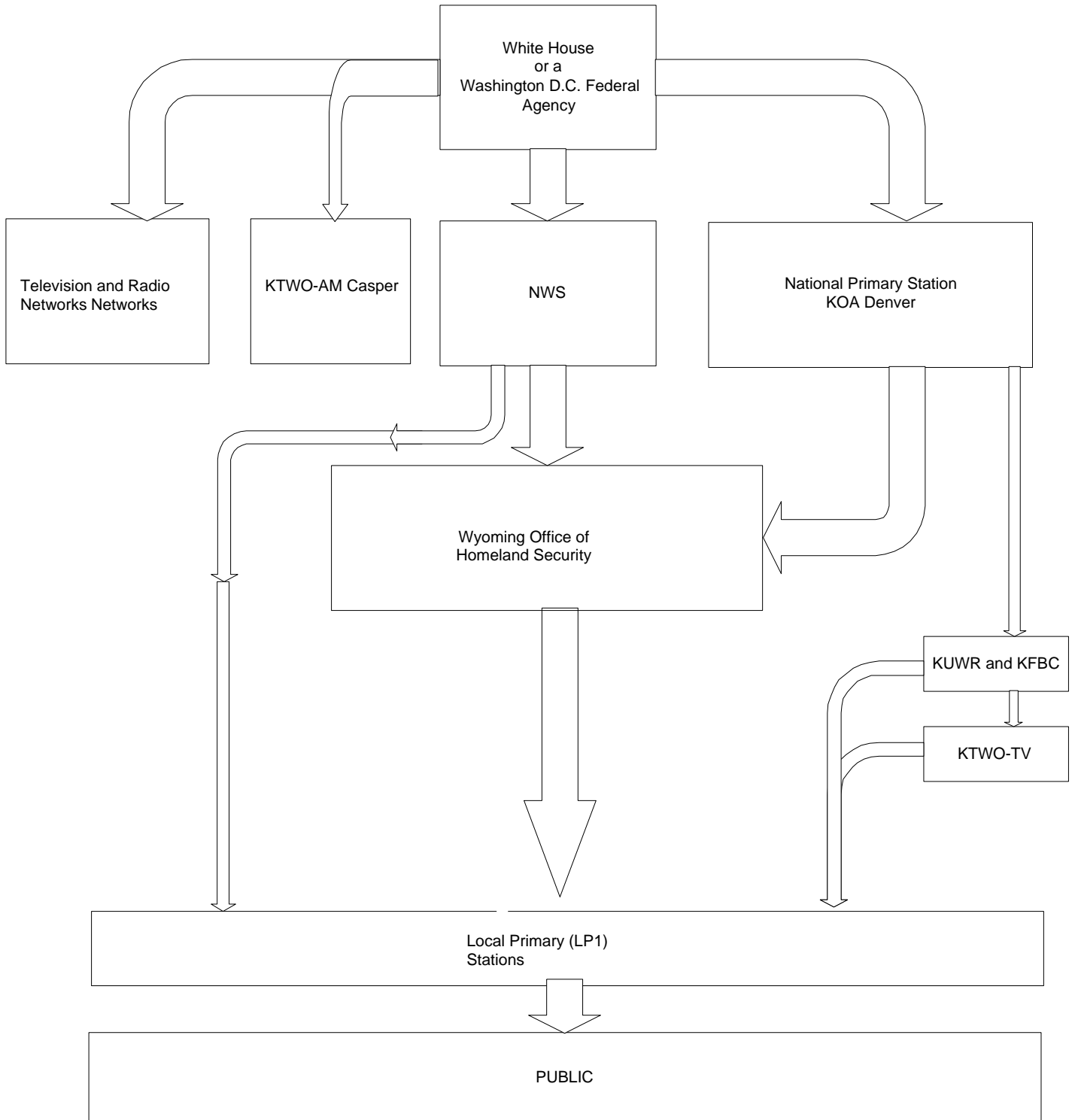
Christopher N. Jones, Riverton.....(307) 857-3898 ext. 726

Kevin Barjenbruch, Salt Lake City, UT(801) 524-5113

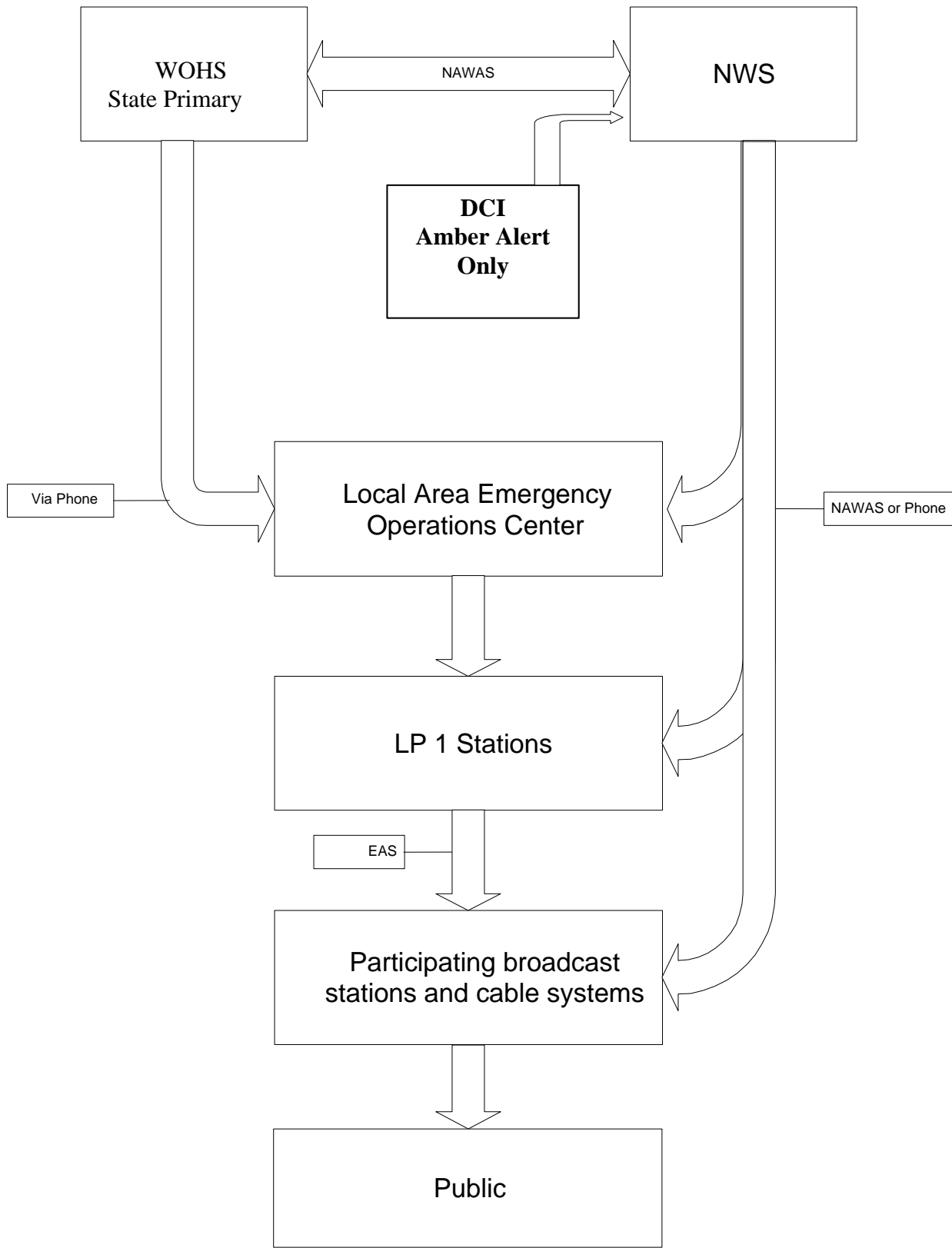
Susan K. Sanders, Rapid City, SD(605) 341-9271

Tom Frieders, Billings, MT(406) 652-0851

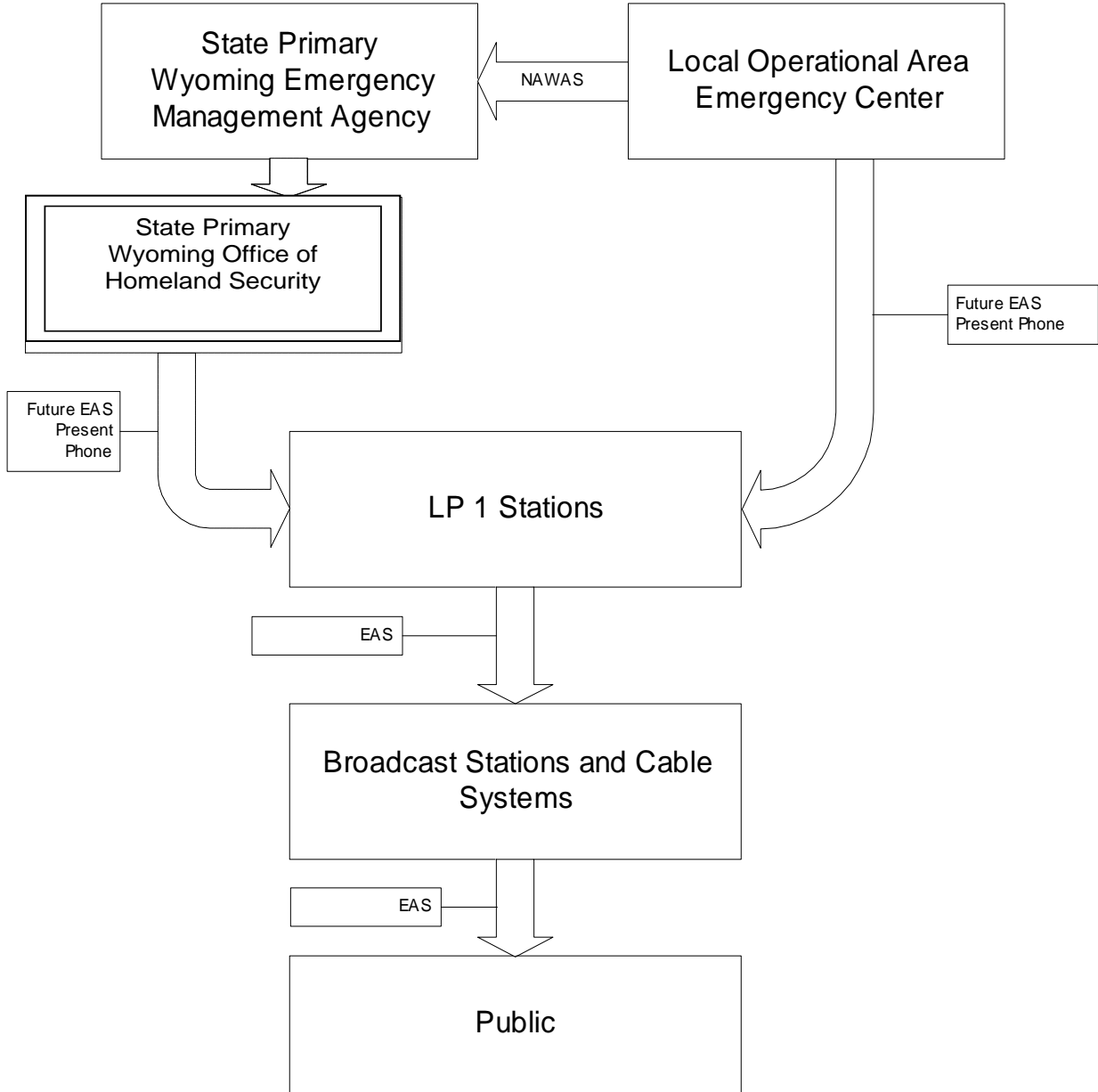
National Level Activation



State Level Activation



Local Level Activation

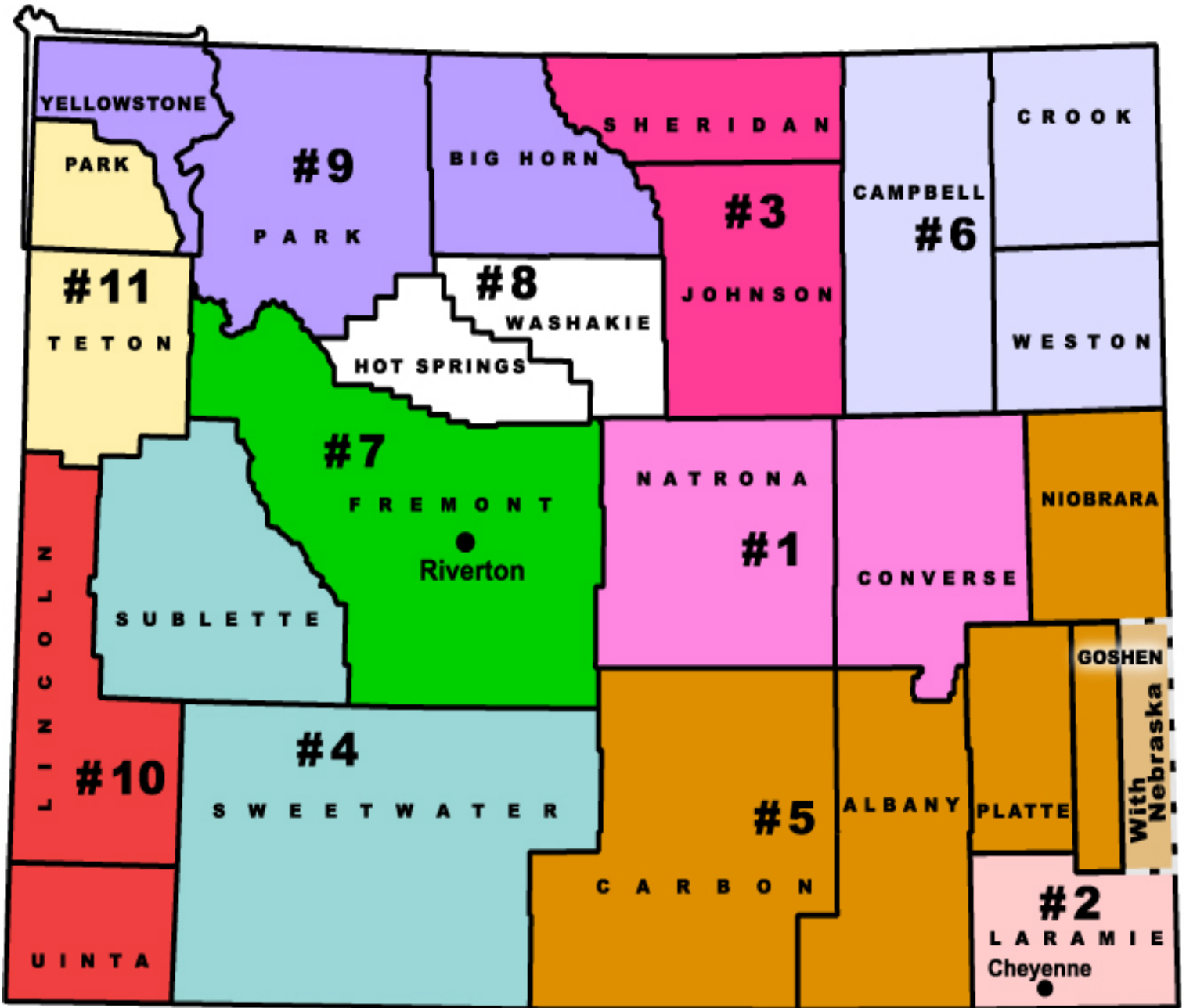


National Weather Service Wyoming Signal Distribution

See attached map

Cheyenne.....	162.550 MHz	Afton.....	162.425 MHz
Casper	162.400 MHz	Cody.....	162.400 MHz
Lander	162.475 MHz	Worland.	162.500 MHz
Sheridan	162.475 MHz	Thermopolis.....	162.425 MHz
Rawlins	162.425 MHz	Glendo Resv.	162.450 MHz
Rock Springs.....	162.550 MHz	Terry Peak, SD	162.525 MHz
N. of Evanston	162.450 MHz	Dubois.....	162.450 MHz
Grant Village.....	162.450 MHz	Kaycee	162.550 MHz
Jackson.....	162.525 MHz	Mammoth.....	162.425 MHz
Kemmerer.....	162.525 MHz	Gillette	162.500 MHz
Pinedale.....	162.500 MHz		
Newcastle.....	162.475 MHz		

Wyoming State EAS Operational Areas



EAS Header Code Analysis

An EAS Header Code contains the following elements, sent in the following sequence:

- [Preamble] ZCZC-ORG-EEE-PSSCCC+TTTT-JJHHMM-LLLLLLLL-
- Attention Signal
- Aural, Visual, or Text Message
- [Preamble] NNNN

[Preamble] = (Clears the system) - Sent automatically by the Encoder.

ZCZC = (Start of ASCII Code) - Sent automatically by the Encoder.

ORG = (Originator Code) - Preset once by user, then sent automatically by the Encoder. See following Section (B.) for code you must use.

EEE = (Event Code) - Determined by user, each time an alert is sent. See following Appendix H for the codes to be used in Wyoming.

PSSCCC = (County-Location Code) - Determined by user, each time an alert is sent. See following Appendix H for the assigned codes of all Wyoming counties.

TTTT = (Duration of Alert) - Determined by user, each time an alert is sent.

JJHHMM = (Date/Time-of-Day) - Sent automatically by the Encoder.

LLLLLLLL = (8-Character ID, Identifying the Broadcaster, Cable TV, Weather Service Office, Nuclear/Industrial Plant, or Civil Authority operating that Encoder.) Preset once by user, then sent automatically by the Encoder. See following below for the format to be followed by all users in constructing their "L-Code".

Attention Signal - Must be sent if aural, visual, or text message is sent.

[Preamble] = (re-clears the system) - Sent automatically by the Encoder when the End-of-Message sequence is initiated.

NNNN = (End-of-Message Code) - Must be initiated manually at the end of every EAS Alert originated by all sources. A failure of the system will occur if this code is not sent to reset the Decoders of all stations/operators that carried that alert.

Wyoming Originator Codes

Wyoming Originator Codes Dakota Originator Codes

Following are the Originator Codes for State activation of the EAS.

WXR - To be used by National Weather Service Offices.

CIV - To be used by Emergency Government, Sheriffs, and all other Civil Authorities.

EAS - To be used by all Broadcasters and Cable TV Operators.

Whether used under the authority of the State EAS Plan, or any of the County/Local Area EAS Plans, the following are the Event Codes to be used in the State of Wyoming. No codes can be added without FCC approval. County/Local Area EAS Plans that desire to use a code not on this list should submit that code request to the Wyoming Association of Broadcasters for SECC and FCC approval and subsequent addition to this list. This list will be maintained as a "Master List" for all Event Codes used in the State of Wyoming.

Wyoming "L-Code" Formats

This 8-character code is affixed to every EAS message originated or re-transmitted by every EAS Encoder. The code identifies the particular broadcaster, cable operator, Weather Service Office, nuclear/industrial plant, or civil authority operating that Encoder. "L-Code" ID's must adhere to the following formats. No deviation from these formats is allowed, since using certain other characters would cause an error in the system.

Broadcasters:

Single Station: "KXXX(FM)

Two Stations: "KXXXKYYY"

Three or more Stations: The call letters of one of the stations or the abbreviated name of the parent company is sufficient. All other stations sending the alert should keep a log of alerts sent, as should the I'D station. (Per FCC)

Cable TV:

(To be determined by the to-be-named SECC Cable TV Chair.)

Weather Service Offices

Use the NWS office's location identifier, followed by a "/" and the letters NWS.

Examples: Cheyenne KCYS/NWS
 Riverton KRIW/NWS
 Rapid City KUNRNWS
 Billings KBYZ/NWS
 Salt Lake City KSLC/NWS

Civil Authorities: This code uses three components in constructing its 8-character code: Portion of "L-Code"
Source of Characters

State: Office of the Governor = WYO GOV
 Wyoming Office of Homeland Security = WOHS

Local Government:

First four characters = First four letters of name of jurisdiction (Name of County, City, etc.)

Next two characters = Abbreviation for type of jurisdiction:

For County use "CO"

For City use "CY"

For Town use "TN"

For Village use "VL"

For Township use "TP"

For Municipality use "MY"

Last two Characters = Abbreviation for type of agency:

For Sheriff use "SH"

For Fire Dept. use "FD"

For Police Dept. use "PD"

For Traffic Authority use "TA"

For Emergency Services use "ES"

For Emergency Management use "EM"

Examples: Laramie County Sheriff = "LARACOSH", City of Casper Police = "CASPCYPDWyoming County-Location Codes ("PSSCCC")

The first digit ("P") can be used to indicate one-ninth of the county code it precedes, using the following pattern
There are no FCC-Approved Special Wyoming Event Codes at this time.

ORIGINATOR AND EVENT CODE TRANSLATIONS

Originator Codes:

Org. Code	English Translation
EAS	Broadcast Station or Cable System
EAN	National Emergency Action Notification Network
CIV	Civil Authority
WXR	The National Weather Service
PEP	Primary Entry Point

Event Code	English Translation	Model 943 Event Code No.	Event Code	English Translation	Model 943 Event Code No.
EAN	National Emergency Action Notification	N/A	HWA	High Wind Watch	21
EAT	National Emergency Action Termination	N/A	HWW	High Wind Warning	22
NIC	National Information Center Message	N/A	HUA	Hurricane Watch	23
NPT	National Periodic Test	N/A	HUW	Hurricane Warning	24
RMT	Required Monthly Test	33	HLS	Hurricane Statement	25
RWT	Required Weekly Test	34	LEW	Law Enforcement Warning	26
ADR	Administrative Message	1	LAE	Local Area Emergency	27
AVA	Avalanche Watch	2	NMN	Network Message Notification	28
AVW	Avalanche Warning	3	TOE	911 Telephone Outage Emergency	29
BZW	Blizzard Warning	4	NUW	Nuclear Power Plant Warning	30
CAE	Child Abduction Emergency	5	DMO	Practice/Demo Warning	31
CDW	Civil Danger Warning	6	RHW	Radiological Hazard Warning	32
CEM	Civil Emergency Message	7	SVA	Severe Thunderstorm Watch	35
CFA	Coastal Flood Watch	8	SVR	Severe Thunderstorm Warning	36
CFW	Coastal Flood Warning	9	SVS	Severe Weather Statement	37
DSW	Dust Storm Warning	10	SPW	Shelter in Place Warning	38
EQW	Earthquake Warning	11	SMW	Special Marine Warning	39
EVI	Evacuation Immediate Notice	12	SPS	Special Weather Statement	40
FRW	Fire Warning	13	TOA	Tornado Watch	41
FFW	Flash Flood Warning	15	TOR	Tornado Warning	42
FFS	Flash Flood Statement	16	TRA	Tropical Storm Watch	43
FLA	Flood Watch	17	TRW	Tropical Storm Warning	44
FLW	Flood Warning	18	TSA	Tsunami Watch	45
FLS	Flood Statement	19	TSW	Tsunami Warning	46
HMW	Hazardous Materials Warning	20	VOW	Volcano Warning	47
FFA	Flash Flood Watch		WSA	Winter Storm Watch	48
			WSW	Winter Storm Warning	49

Wyoming County-Location Codes ("PSSCCC")

The first digit ("P") can be used to indicate one-ninth of the county code it precedes, using the following pattern:

0 = Entire County

1 = NW	2 = NC	3 = NE
4 = WC	5 = C	6 = EC
7 = SW	8 = SC	9 = SE

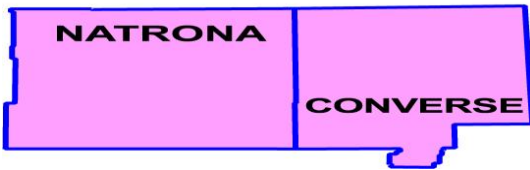
Examples: for all of Natrona County, the Location code would be "056025". Most County-Location Codes in the state of Wyoming will be constructed to indicate the entire county.

STATE OF WYOMING COUNTY CODES

State of Wyoming (used to activate the entire state) 56000

Albany County	056001
Big Horn County	056003
Campbell County	56005
Northern Campbell County NWS	256005
Central Campbell County NWS	556005
Southern Campbell County NWS	856005
Carbon County	056007
Converse County	056009
Crook County	056011
Fremont County	056013
Goshen County	056015
Hot Springs County	056017
Johnson County	056019
Laramie County	056021
Laramie County excluding City of Cheyenne	0156021
Laramie County including City of Cheyenne	0256021
Lincoln County	056023
Natrona County	056025
Niobrara County	056027
Park County	056029
Platte County	056031
Sheridan County	056033
Sublette County	056035
Sweetwater County	056037
Teton County	056039
Uinta County	056041
Washakie County	056043
Weston County	056045
Yellowstone National Park (Uses Park County)	056029

WY EAS Area 1



Natrona/Converse Local Area

Local Area 1

(This Area includes the towns and cities within Natrona and Converse Counties. Casper, Evansville, Mills, Bar Nunn, Midwest, Edgerton, Alcova, Douglas, Glenrock,)

Station	Location	Frequency	EAS Designation	Primary EAS Assignment	Secondary EAS Assignment	Other Assignment
KTWO-AM	CASPER	1030 KHZ	LP1	NOAA	WY PR	LOAPC & Natrona EOC
KTWO-TV	CASPER	Ch. 2 (17)	LP2	LP1	NOAA	WY PR
KCWY-TV	CASPER	CH. 13	PN	LP1	NOAA	WY PR
KASS-FM	CASPER	106.9 MHZ	PN	LP1	NOAA	WY PR
KCSP-FM	CASPER	90.3 MHZ	PN	LP1	NOAA	WY PR
KCWC-TV	CASPER	CH. 6	PN	LP1	NOAA	WY PR
KFNB-TV	CASPER	CH. 20	PN	LP1	NOAA	WY PR
KGWC-TV	CASPER	CH. 14	PN	LP1	NOAA	WY PR
KHOC-FM	CASPER	102.5 MHZ	PN	LP1	NOAA	WY PR
KTED FM	CASPER	100.5 MHZ	PN	LP1	LP2	NOAA
KHAD FM	CASPER	105.5 MHZ	PN	LP1	LP2	NOAA
KKRR FM	CASPER	88.3 MHZ	PN	WY PR	K2TV	
KKTY-AM	DOUGLAS	1470 KHZ	PN	KWYY	NOAA	
KKTY-FM	DOUGLAS	99.3 MHZ	PN	KWYY	NOAA	
KFCB – LP	Douglas	105.1	PN	KKTY FM	NOAA	WY PR
KDAD FM	Douglas	100.5 MHZ	PN	LP1	LP2	NOAA
KMGW-FM	CASPER	94.5 MHZ	PN	LP1	NOAA	WY PR
KMLD-FM	CASPER	97.3 MHZ	PN	LP1	NOAA	WY PR
KQLT-FM	CASPER	103.7 MHZ	PN	LP1	NOAA	WY PR
KRVK-FM	RIVER WEST	107.9 MHZ	PN	LP1	NOAA	WY PR
KKTL AM	CASPER	1400 KHZ	PN	LP1	NOAA	WY PR
KTRS-FM	CASPER	104.7 MHZ	PN	LP1	NOAA	WY PR
KUYO-AM	EVANSVILLE	830 KHZ	PN	LP1	NOAA	WY PR
KVOC-AM	CASPER	1230 KHZ	PN	LP1	NOAA	WY PR
KYOD-FM	DOUGLAS	100.1 MHZ	PN	KWYY	NOAA	
KWYY-FM	MIDWEST	95.5 MHZ	PN	LP1	NOAA	WY PR
Bresnan	CASPER	Cable	PN	LP1	KTWO TV	WY PR
Communicom	DOUGLAS	Cable	PN	KWYY	EOC BY PHONE	WY PR

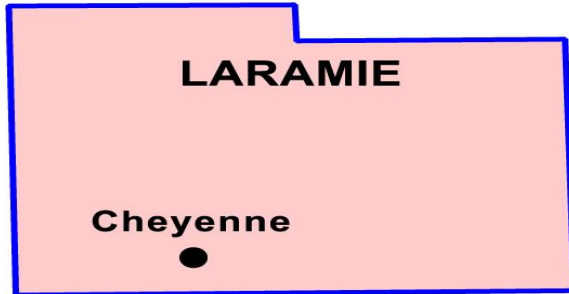
*WY PR – Wyoming Public Radio

Natrona/Converse Local Area

Local Area 1

County	Authority to Activate	Phone Number
Natrona	Sheriff's Office	(307) 235-9300
Converse	Sheriff's Office	(307) 358-4700

WY EAS Area 2



NOTE: Please contact the Sheriff's Office in order to contact the county Emergency Management Coordinator

Laramie Local Area

Local Area 2 (This Area includes the towns and cities within Laramie County, Cheyenne and Pine Bluffs.

Station	Location	Frequency	EAS Designation	Primary EAS Assignment	Secondary EAS Assignment	Other Assignment
KFBC-AM	CHEYENNE	1240 KHZ	LP1	NOAA	LP2	KOA-AM (Denver NP) WY PR
KOLZ-FM	CHEYENNE	100.7 MHZ	LP2	LP1	NOAA	
KXBG FM	CHEYENNE	97.9 MHZ	PN	LP2	NOAA	KUNC
KGWN-TV	CHEYENNE	CH. 5	PN	LP1	LP2	NOAA
KKTU-TV	CHEYENNE	CH. 33	PN	LP1	NOAA	KTWO AM
KLEN-FM	CHEYENNE	106.3 MHZ	PN	LP1	NOAA	
KLWY-TV	CHEYENNE	CH. 27	PN	KTWO AM	NOAA	
KIGN FM	BURNS	101.9 MHZ	PN	LP1	NOAA	
KAZY FM	CHEYENNE	93.7 MHZ	PN	LP1	WY PR	NOAA
KRAE-AM	CHEYENNE	1480 KHZ	PN	LP1	WY PR	NOAA
KJL-AM	CHEYENNE	1370 KHZ	PN	LP1	LP2	NOAA
KKWY AM	CHEYENNE	1630 KHZ	PN	LP1	LP2	NOAA
KGAB-AM	CHEYENNE	650 KHZ	PN	LP1	NOAA	
KKPL FM	CHEYENNE	99.9 MHZ	PN	LP2	NOAA	KUNC/CO 91.5
KRRR FM	CHEYENNE	104.9 MHZ	PN	LP1	WY PR	NOAA
KREO FM	PINE BLUFFS	105.3 MHZ	PN	LP1	WY PR	NOAA
KKAW FM	ALBIN	107.3 MHZ	PN	LP1	WY PR	NOAA
Bresnan	CHEYENNE	Cable	PN	LP1	LP2	NOAA
Pine Bluffs Community TV System	PINE BLUFFS	Cable	PN	KGWN TV Channel 5	LP2	

*WYPR – Wyoming Public Radio

Laramie Local Area

Local Area 2

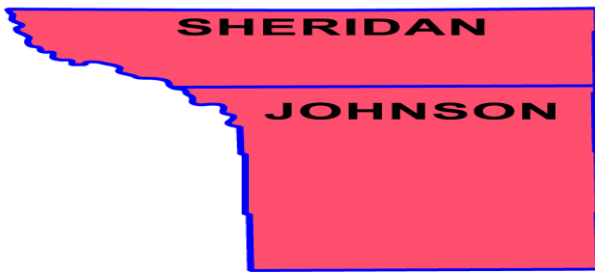
NOTE: Please contact the Sheriff's Office in order to contact the county Emergency Management Coordinator

County	Authority to Activate	Phone Number
Laramie	Sheriff's Office	(307) 633-4711

Sheridan/Johnson County Local Area

Local Area 3

WY EAS Area 3



(This Area includes the towns and cities within Sheridan and Johnson Counties. Sheridan, Ranchester, Dayton, Story, Buffalo, Kaycee, and Barnum.)

Station	Location	Frequency	EAS Designation	Primary EAS Assignment	Secondary EAS Assignment	Other Assignment
KLGT-FM	BUFFALO	92.9 MHZ	LP1	NOAA AND EOC BY PHONE	WY PR	KYTI FM
KZZS FM	STORY	98.3 MHZ	PN	NOAA AND EOC BY PHONE	WY PR	KYTI FM
KBBS-AM	BUFFALO	1450 KHZ	PN	NOAA AND EOC BY PHONE	WY PR	KYTI FM
KSWY TV	SHERIDAN	Ch. 7	PN	LP1	NOAA	
KLQQ FM	CLEARMONT	104.9 MHZ	PN	LP1	NOAA	WY PR
KWYO-AM	SHERIDAN	1410 KHZ	PN	LP1	NOAA	
KROE-AM	SHERIDAN	930 KHZ	PN	LP1	NOAA	
KZWI-FM	SHERIDAN	94.9 MHZ	PN	LP1	NOAA	
KSGW-TV	SHERIDAN	CH. 12	PN	LP1	NOAA	
KYTI FM	SHERIDAN	93.7 MHZ	PN	LP1	NOAA	
Bresnan	SHERIDAN	Cable	PN	KYTI	KROE AM	
Bresnan	BUFFALO	Cable	PN	KBBS	KROE AM	

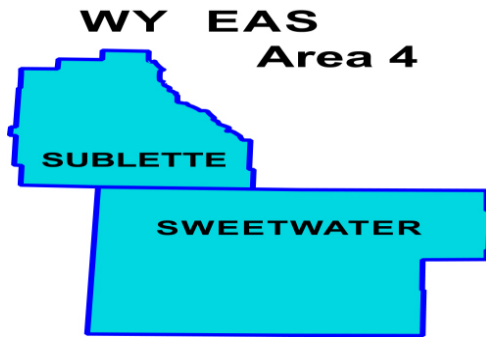
***WYPR = Wyoming Public Radio**

Sheridan/Johnson County Local Area

Local Area 3

NOTE: Please contact the Sheriff's Office in order to contact the county Emergency Management Coordinator

County	Authority to Activate	Phone Number
Sheridan	Sheriff's Office	(307) 672-3453
Johnson	Sheriff's Office	(307) 684-5581



Sweetwater Local Area Local Area 4

(This Area includes the towns and cities within Sweetwater County. Rock Springs, Green River, Wamsutter and Reliance.)

Station	Location	Frequency	EAS Designation	Primary EAS Assignment	Secondary EAS Assignment	Other Assignment
KRKK-AM	ROCK SPRINGS	1360 KHZ	LP1	EOC VIA PHONE	LP2	SR/KTWO-TV
KZWB FM	GREEN RIVER	97.9 MHZ	PN	LP1A KQSW	NOAA	WY PR
KYCS-FM	ROCK SPRINGS	95.1 MHZ	LP2	LP1A KQSW	NOAA	WY PR
KFRZ-FM	GREEN RIVER	92.1 MHZ	PN	LP1A KQSW	NOAA	WY PR
KUGR-AM	GREEN RIVER	1490 KHZ	PN	LP1A KQSW	NOAA	WY PR
KGWR-TV	ROCK SPRINGS	CH 13	PN	KTWO AM	NOAA	WY PR
KPIN-FM	PINEDALE	101.1 MHZ	PN	WY PR	KTWO TV	WY PR
KQSW-FM	ROCK SPRINGS	96.5 MHZ	LP1A	LP1	LP2	WY PR
KSIT-FM	ROCK SPRINGS	104.5 MHZ	PN	LP1	LP2	WY PR
*KRAN FM	WAMSUTTER	97.5 MHZ	PN	LP2	NOAA	WY PR
KUWZ-FM	ROCK SPRINGS	90.5 MHZ	PN	LP1	LP2	WY PR
Sweetwater Cable	ROCK SPRINGS GREEN RIVER	Cable	PN	LP1	LP2	WY PR

***WYPR = Wyoming Public Radio**

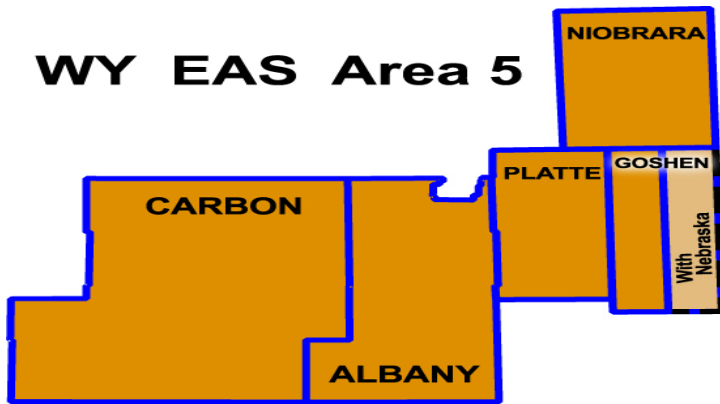
Sweetwater Local Area

Local Area 4

NOTE: Please contact the Sheriff's Office in order to contact the county Emergency Management Coordinator

County	Authority to Activate	Phone Number
Sweetwater	Sheriff's Office	(307) 872-6350
Sublette	Sheriff's Office	(307) 367-4378

WY EAS Area 5



Albany/Carbon/Platte/Goshen Niobrara County Local Area Local Area 5

(This Area includes the towns and cities within Albany and Carbon Counties. Laramie, Centennial, Woods Landing, Rock River, Rawlins, Sinclair, Hanna, Medicine Bow, Saratoga, Encampment, Shirley Basin, Chugwater, Torrington, Lingle, Fort Laramie, Guernsey, Lusk and Lamont.)

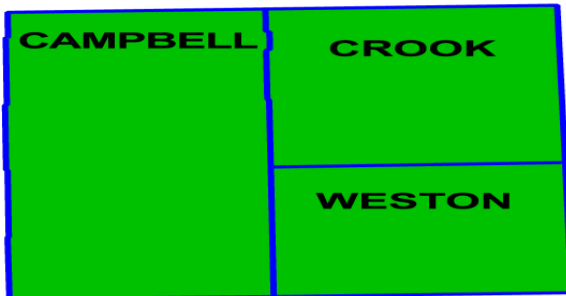
Station	Location	Frequency	EAS Designation	Primary EAS Assignment	Secondary EAS Assignment	Other Assignment
KUWR-FM	LARAMIE	91.9 MHZ	LP1	NOAA AND EOC BY PHONE	KOLZ-FM	KOA-AM
KOWB-AM	LARAMIE	1290 KHZ	PN	LP1	NOAA	WY PR
KHAT AM	LARAMIE	1210 KHZ	PN	LP1	NOAA	WY PR
KCGY-FM	LARAMIE	95.1 MHZ	LP2	LP1	NOAA	WY PR
KFNR-TV	RAWLINS	CH 11 (9)	PN	KTWO AM	NOAA	WY PR
KIMX-FM	LARAMIE	96.7 MHZ	PN	LP1	NOAA	WY PR
KIQZ-FM	RAWLINS	92.7 MHZ	PN	LP1	NOAA	WY PR
KRAL-AM	RAWLINS	1240 KHZ	PN	LP1	NOAA	WY PR
KARS FM	LARAMIE	102.9 MHZ	PN	LP1	NOAA	KUNC/CO 91.5
KYCN-AM	WHEATLAND	1340 KHZ	PN	NOAA/EOC	KUWR	
KGOS AM	TORRINGTON	1490 KHZ	PN	LP2	NOAA	KANT FM
KERM FM	TORRINGTON	98.3 MHZ	PN	LP2	NOAA	KANT FM
KTGA FM	Saratoga	99.3 MHZ	PN	LP1	NOAA	
KBDY FM	Hanna	102.1 MHZ	PN	LP1	NOAA	
KANT FM	GUERNSEY	104.1 MHZ	PN	NOAA	WY PR	
KMJY FM	Chugwater	99.5 MHZ	PN	LP1	KFBC AM	WY PR
KUSZ FM	LARAMIE	93.9 MHZ	PN	LP1	NOAA	WY PR
KZEW FM	WHEATLAND	101.7 MHZ	PN	NOAA/EOC	WY PR	
Bresnan	Rawlins	Cable	PN	LP1	LP2	NOAA
Pine Bluffs Community TV System	Guernsey	Cable	PN	KGWN TV Channel 5	KSTF Channel 10	NOAA
Bresnan	Laramie	Cable`	PN	LP1	LP2	NOAA
Pine Bluffs Community TV System	Ft. Laramie	Cable	PN	KGWN TV Channel 5	KSTF Channel 10	NOAA

***WYPR = Wyoming Public Radio**

Albany/Carbon County Local Area NOTE: Please contact the Sheriff's Office in order to contact the county Emergency Management Coordinator
Local Area 5

County	Authority to Activate	Phone Number
Albany	Sheriff's Office	(307) 721-5322 After Hrs. Dispatch (307) 721-2526
Platte	Sheriff's Office	(307) 322-2331
Goshen	Sheriff's Office - (307) 532-4026	After Hrs. Torrington PD Dispatch (307) 532-7001
Niobrara	Sheriff's Office	(307) 334-2240
Carbon	Sheriff's Office	(307) 324-2776

WY EAS Area 6



Campbell/Crook/Weston County Local Area

Local Area 6

(This Area includes the towns and cities within Campbell, Crook and Weston Counties. Gillette, Wright, Moorcroft, Sundance, Upton and Newcastle.)

***KRUG on air – June of 2009**

Station	Location	Frequency	EAS Designation	Primary EAS Assignment	Secondary EAS Assignment	Other Assignment
KIML-AM	GILLETTE	1270 KHZ	LP1	NOAA Gillette	EOC/UHF	KZWY FM
*KRUG FM	UPTON	104.5 MHZ	PN	LP1	NOAA	WY PR
KAML-FM	GILLETTE	97.3 MHZ	LP1A	NOAA	EOC	KZWY FM
KGWY-FM	GILLETTE	100.7 MHZ	LP1B	NOAA	EOC	KZWY FM
KASL-AM	NEWCASTLE	1240 KHZ	PN	LP1B	NOAA Newcastle	WY PR
KYDT-FM	SUNDANCE	103.1 MHZ	PN	NOAA, Lead, SD	KHSD TV, Lead SD	
KDDV FM	WRIGHT	101.5 MHZ	PN	WY PR	NOAA	EOC
KXXL FM	Moorcroft	106.1 MHZ	PN	LP1	NOAA	WY PR
Bresnan	Gillette	Cable	PN	LP1A	LP1	WY PR
Bresnan	Moorcroft	Cable	PN	LP1B	LP1	WY PR
Bresnan	Upton	Cable	PN	KASL	KGWY FM	WY PR
Bresnan	Wright	Cable	PN	LP1	KAML FM	WY PR
Bresnan	Newcastle	Cable	PN	KASL	KGWY FM	WY PR
Tongue River Cable TV	Hulett, Pine Haven, Osage, Sundance, Midwest, Ranchester/Dayton, Story	Cable	PN	LP1		WY PR

***WYPR = Wyoming Public Radio**

Campbell/Crook/Weston County Local Area

Local Area 6

NOTE: Please contact the Sheriff's Office in order to contact the county Emergency Coordinator

County	Authority to Activate	Phone Number
Campbell	Sheriff's Office	(307) 682-7271
Crook	Sheriff's Office	(307) 283-1225
Weston	Sheriff's Office	(307) 746-4444

--	--	--

WY EAS Area 7



Fremont County Local Area

Local Area 7

(This Area includes the towns and cities within Fremont County. Lander and Riverton.)

*After digital transition Feb 2009

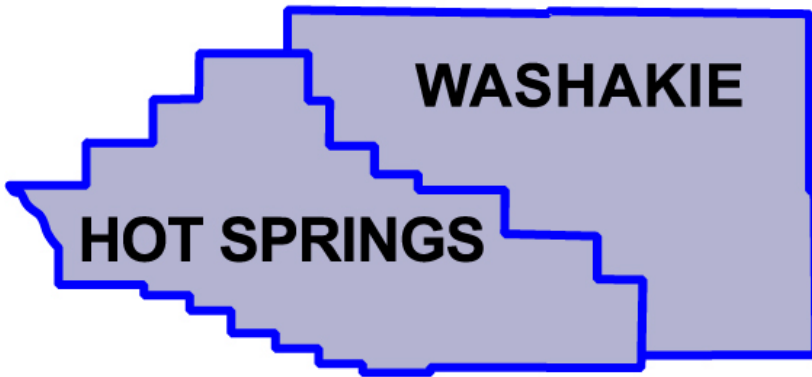
Station	Location	Frequency	EAS Designation	Primary EAS Assignment	Secondary EAS Assignment	Other Assignment
KDLY-FM	LANDER	97.5 MHZ	LP1	NOAA	EOC BY PHONE	WY PR
KTRZ-FM	RIVERTON	93.1 MHZ	LP2	LP1	NOAA	WY PR
KCWC-TV	LANDER	CH 4	PN	LP1	LP2	NOAA
KWYW FM	RIVERTON	99.1 MHZ	PN	LP1	LP2	NOAA
KGWL-TV	LANDER	CH 5 (7)*	PN	KTWO AM	NOAA	WY PR
KOVE-AM	LANDER	1330 KHZ	PN	LP1	LP2	NOAA
KCWC-FM	RIVERTON	88.1 MHZ	PN	LP1	LP2	NOAA
KFNE-TV	RIVERTON	CH 10	PN	KTWO AM	NOAA	WY PR
KTAK-FM	RIVERTON	93.9 MHZ	PN	LP1	LP2	NOAA
KVOW-FM	RIVERTON	1450 KHZ	PN	LP1	LP2	NOAA
Bresnan	RIVERTON	Cable	PN	LP1	LP2	WY PR
Bresnan	LANDER	Cable	PN	LP1	LP2	WY PR

Fremont County Local Area *WYPR – Wyoming Public Radio

NOTE: Please contact the Sheriff's Office in order to contact the county Emergency Coordinator
Local Area 7

County	Authority to Activate	Phone Number
Fremont	Sheriff's Office	(307) 332-5611

WY EAS Area 8



Hot Springs/Washakie County Local Area

Local Area 8

(This Area includes the towns and cities within Hot Springs and Washakie Counties. Thermopolis, Shoshoni, Worland.)

Station	Location	Frequency	EAS Designation	Primary EAS Assignment	Secondary EAS Assignment	Other Assignment
KTHE-AM	THERMOPOLIS	1240 KHZ	PN	EOC BY PHONE	NOAA	WY PR
KDNO FM	THERMOPOLIS	101.7 MHZ	PN	EOC BY PHONE	NOAA	WY PR
KWOR-AM	WORLAND	1340 KHZ	LP1A	KZMQ FM	NOAA	WY PR - EOC
KKLX-FM	WORLAND	96.1 MHZ	LP1	KZMQ FM	NOAA	WY PR - EOC
Bresnan	WORLAND	Cable	PN	KTHE	NOAA	EOC/PHONE
Bresnan	THERMOPOLIS	Cable	PN	KTHE	NOAA	EOC/PHONE

*WYPR = Wyoming Public Radio

HOT SPRINGS/WASHAKIE COUNTY LOCAL AREA

Area 8

NOTE: Please contact the Sheriff's Office in order to contact the county Coordinator

County	Authority to Activate	Phone Number
Hot Springs	Sheriff's Office	(307) 864-2622
Washakie	Sheriff's Office	(307) 347-2242

WY EAS Area 9



Park/Big Horn County Local Area

Local Area 9

(This Area includes the towns and cities within Park and Big Horn Counties. Cody, Powell, Lovell, Greybull, Basin and Byron.)

Station	Location	Frequency	EAS Designation	Primary EAS Assignment	Secondary EAS Assignment	Other Assignment
KROW FM	LOVELL	107.1 MHZ	PN	LP1	KPOW AM	NOAA
KCGL FM	POWELL	104.1 MHZ	PN	NOAA	WY PR & EOC	KEMC – MT PR
KODI-AM	CODY	1400 KHZ	PN	NOAA	LP2	WY PR
KPOW-AM	POWELL	1260 KHZ	LP2	LP1	NOAA	
KTAG-FM	CODY	97.9 MHZ	PN	NOAA	WY PR & EOC	KEMC – MT PR
KUWP	POWELL	90.1 MHZ	PN	NOAA	WY PR & EOC	KEMC – MT PR
KZMQ-AM	GREYBULL	1140 KHZ	PN	NOAA	WY PR	KEMC/EOC
KZMQ-FM	GREYBULL	100.3 MHZ	LP1	NOAA	WY PR	KEMC/EOC
Lovell Cable	LOVELL	Cable	PN	LP1	KUWP	
Bresnan	CODY	Cable	PN	LP1	EOC BY PHONE	
Bresnan	GREYBULL	Cable	PN	LP1	NOAA	
Bresnan	POWELL	Cable	PN	LP1	NOAA	
TCT West	LOVELL BASIN, BYRON, GREYBULL, BASIN, COWLEY, OTTO, SHELL, MANDERSON	Cable	PN	LP1	EOC BY PHONE	

*MT PR – Montana Public radio *WY PR – Wyoming Public Radio

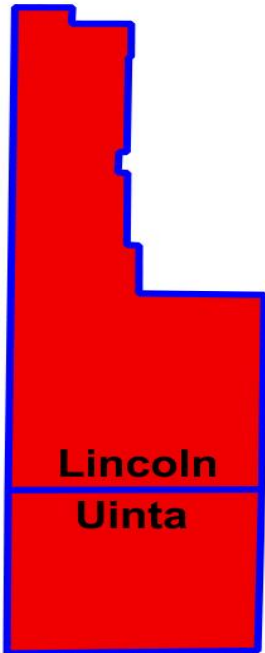
PARK/BIG HORN COUNTY LOCAL AREA

Local Area 9

NOTE: Please contact the Sheriff's Office in order to contact the county coordinator

County	Authority to Activate	Phone Number
Park	Sheriff's Office	(307)527-8700
Big Horn	Sheriff's Office	(307) 568-2324 1-800-500-2324
Yellowstone National Park Dispatch		(307)344-2640

WY EAS Area 10



Lincoln/Uinta Local Area

Local Area 10

(This Area includes the towns and cities within Lincoln and Uinta Counties. Evanston, Kemmerer, Afton, Mountain View, and Cokeville.)

Station	Location	Frequency	EAS Designation	Primary EAS Assignment	Secondary EAS Assignment	Other Assignment
KMER-AM	KEMMERER	950 KHZ	PN	LP1	KQSW FM	
KDWY FM	DIAMONDVILLE	105.3 MHZ	PN	LP1	KQSW FM	
KEVA-AM	EVANSTON	1240 KHZ	PN	KQSW FM	WY PR	KSL FM
KAOX FM	KEMMERER	107.3 MHZ	PN	LP1	KQSW FM	
KUWR	EVANSTON	93.5 MHZ	LP1	*See Area 5		
KBMG	EVANSTON	106.1 MHZ	PN	WY PR	NOAA	
KRSV-AM	AFTON	1210 KHZ	PN	KMTN FM	WY PR	NOAA
KNYN FM	EVANSTON	99.1 MHZ	PN	KQSW FM	WY PR	KSL FM
KRSV-FM	AFTON	98.7 MHZ	PN	KMTN FM	WY PR	NOAA
Adelphia	EVANSTON	Cable	PN	LP1	KQSW FM	
All West Comm.	EVANSTON	Cable	PN	LP1	KQSW FM	
Mallard	KEMMERER AFTON, DIAMONDVILLE	Cable	PN	Not Testing	Not Testing	

Lincoln/Uinta Local Area - *WYPR = Wyoming Public Radio

Local Area 10

NOTE: Please contact the Sheriff's Office in order to contact the county Coordinator

County	Authority to Activate	Phone Number
Lincoln	Sheriff's Office	(307) 877-3971
Uinta	Sheriff's Office	(307) 783-1000

WY EAS Area 11



Teton Local Area

Local Area 11

(This Area includes the towns and cities within Teton County. Jackson, Wilson, and Moran Junction.)

Station	Location	Frequency	EAS Designation	Primary EAS Assignment	Secondary EAS Assignment	Other Assignment
KZJH-FM	JACKSON	95.3 MHZ	LP1	NOAA/EOC BY PHONE	WY PR	
KVRG FM	JACKSON	103.7 MHZ	PN	LP1	NOAA	WY PR
KRVQ FM	JACKSON	92.5 MHZ	PN	LP1	NOAA	WY PR
KJWY-TV	JACKSON	CH 2	PN	LP1	NOAA	WY PR
KMTN-FM	JACKSON	96.9 MHZ	PN	LP1	NOAA	WY PR
KSGT-AM	JACKSON	1340 KHZ	PN	LP1	NOAA	WY PR
KUWJ-FM	JACKSON	90.3 MHZ	PN	LP1	NOAA	WY PR
Mallard	BIG PINEY	Cable	PN	LP1	WY PR	NOAA

TETON LOCAL AREA - *WYPR = Wyoming Public Radio

Area 11

NOTE: Please contact the Sheriff's Office in order to contact the county Emergency Management Coordinator

County	Authority to Activate	Phone Number
Teton	Sheriff's Office	307-733-2331
Yellowstone National Park Dispatch		307-344-2640