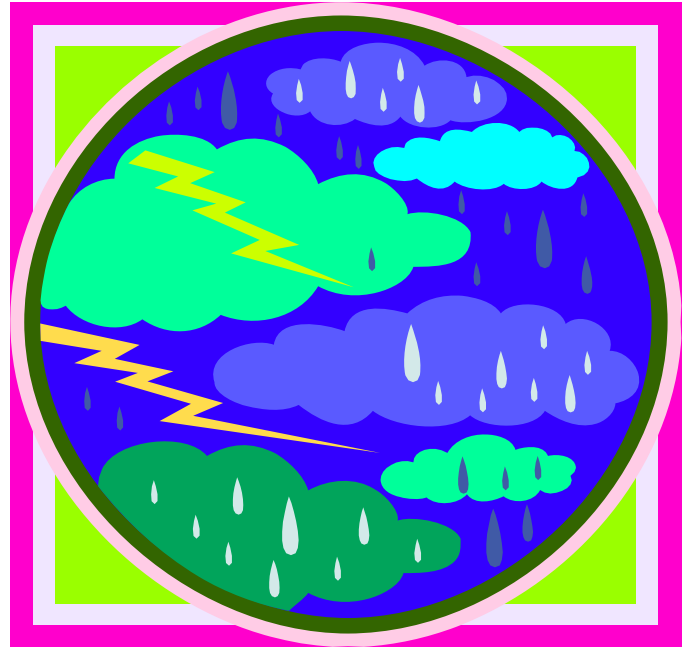


# Wyoming State Plan For

# The Emergency Alert System

*EAS Plan*

*Updated*  
May 10, 2007



Prepared by  
Alan R. Esterline  
Wyoming State Emergency Communications  
Coordinator

## Table of Contents

SIGNATURES OF APPROVAL AND CONCURRENCES .....	4
PURPOSE .....	5
INTRODUCTION .....	5
AUTHORITY .....	5
ASSUMPTIONS.....	5
DEFINITIONS.....	6
OPERATION OF THE EMERGENCY ALERT SYSTEM.....	8
National-level EAS .....	8
State-level EAS.....	8
Local-level EAS.....	9
Weather EAS .....	9
PROCEDURES FOR PUBLIC OFFICIALS .....	9
PROCEDURES FOR BROADCAST AND CABLE MEDIA.....	11
MEDIA EAS ACTIVITIES.....	12
MEDIA RESPONSIBILITIES .....	12
TESTS	
Required Weekly Test (RWT).....	13
Required Monthly Test (RMT).....	13
Wyoming EAS Scripts and Formats .....	16
AUTHORITY TO ACTIVATE THE WYOMING STATE EAS SYSTEM .....	17
NATIONAL ACTIVATION EAS CHART .....	18
STATE LEVEL EAS CHART .....	19
LOCAL LEVEL EAS CHART.....	20
NATIONAL WEATHER RADIO AREAS (With attachment) .....	21

WYOMING EAS OPERATIONAL AREAS AND LP-1 STATIONS .....22

EAS HEADER CODE ANALYSIS .....23

    WYOMING ORIGINATOR CODES .....24

    WYOMING “L-CODE” FORMATS .....24

        Broadcasters .....24

        Cable TV .....24

        Weather Service Offices .....25

        Civil Authorities .....25

        FCC Event Codes.....26

        State of Wyoming County Codes .....27

WYOMING OPERATIONAL AREA SECTIONS .....28

    Natrona/Converse Operational Area.....28

    Laramie Operational Area .....29

    Sheridan/Johnson Operational Area .....30

    Sweetwater Operational Area .....31

    Albany/Carbon/Platte/Goshen/Niobrara Operational Area ..... 32-33

    Campbell/Crook/Weston Operational Area.....34

    Fremont Operational Area .....35

    Hot Springs/Washakie Operational Area.....36

    Park/Big Horn Operational Area .....37

    Uinta/Lincoln/Sublette Operational Area .....38

    Teton Operational Area .....39

**Signatures of Approval and Concurrence:**

## Approval/Concurrence:

Approved:

Wyoming Emergency Management Coordinator  
Robert J. Bezek

---

National Weather Service  
Bill Parker

---

FCC Enforcement Bureau  
David Solomon

---

Wyoming Association of Broadcasters  
Laura Grott

---

# WYOMING STATE EMERGENCY ALERT SYSTEM (EAS) PLAN

## **Purpose**

The purpose of this plan is to provide procedures for statewide activation of the Wyoming State-Level Emergency Alert System (EAS).

## **Introduction**

These procedures were prepared with the help of the Wyoming Emergency Management Association, the National Weather Service, each county Emergency Operational Center, State AM/FM and Television Stations, State Cable systems, and State and Local Officials of the State of Wyoming. This plan provides the necessary means and operating procedures for designated state and federal officials to issue emergency information and warning to the general public of Wyoming. Because of the existing commercial and public broadcast coverage Wyoming viewers and listeners will be able to receive emergency information in a timely and concise manner.

Acceptance of or participation in this plan shall not be deemed to prohibit a licensee of cable operator from exercising their independent discretion and responsibility in any given situation. The Federal Communications Commission Rules and Regulations provide station management to use discretionary exercise regarding the transmission of emergency messages to the general public. Broadcast stations and cable systems originating emergency communications shall be deemed to have conferred rebroadcast authority as specified in FCC Rules Section 11.54.

Detailed procedures, agreed upon by the broadcast and cable industries and the local County Emergency Operational Centers, which will permit designated government officials to issue local emergency messages and instructions, via EAS in threatened or actual emergencies, will be published as Local Operational Area Plans.

## **Authority**

Title 47 U.S.C. 151, 154(1) and (o), 303(r), 524(9) and 606; and 47 C.F.R. Part 11, FCC Rules and Regulations, Emergency Alert System (EAS) as pertains to day-to-day emergency operations

## **Assumptions**

The listening and viewing habits of the public are inherent factors of consideration and are conducive to the positive effectiveness of the Wyoming EAS. In times of emergency or crisis most people by instinct or habit will turn on his or her radio or television receiver. However, continued public education is required to assure the public that the broadcast medium is the established method of distributing emergency information from local, state and national sources.

All participating broadcast stations and cable media will monitor NOAA Weather Radio, if possible, as one of the two mandatory audio inputs. If unable to monitor an assigned input the SECC will work with the station to find an input that is both receivable and suitable. This is NOT a final draft, but should be considered a living, working document. As conditions within the broadcast community and State change so should the document.

All LP-1 stations should have the capability of monitoring at least three audio inputs; 1) the state relay network system, 2) NOAA Weather Radio, and 3) the local government activation source.

The number of Operational Areas in the State of Wyoming will be changed to eleven.

The basic monitoring assignments will be as stated in each of the local operational areas.

The Wyoming Emergency Management Agency will provide EAS information to the broadcast and cable associations for distribution to their membership.

## **Definitions**

Emergency: A situation posing an extraordinary threat to the safety of life and property. Examples are, but not limited to natural situations such as: floods, heavy snow, high winds, icing conditions, widespread fires, discharge of toxic gas, tornadoes, widespread power failures, industrial explosions, and civil disorders,

Designated Government Officials: The person or persons designated by governments signatory to this procedure to request activation of the EAS and to make emergency announcements.

EAS Designations: These are the FCC's EAS Station Designations reflecting the EAS status of every broadcaster and cable operator. Consult the FCC Mapbook.

National Primary (NP) - Source of all National EAS Alerts. This station will be monitored by designated LP stations.

State Primary (SP) - A primary source of EAS State programming which can originate with a Governor or designated representative, such as a state's emergency operations officer. (WEMA)

State Relay (SR) - Future SR stations are those transmitter/repeater sites operated by the authority of the Wyoming Highway Patrol. They will relay those State EAS Messages that are received from the Wyoming Emergency Management Agency; when and if they become involved. They can also relay National, Local, and Weather Alerts to those areas where no other means is available.

Local Primary (LP-1) - The local broadcast station in a defined operational area that is designated the primary station to transmit EAS messages. LP-1 stations are primarily sources of Local Area Emergency EAS Messages. They can also relay National, State, and Weather Alerts.

Local Primary (LP-2) - The local broadcast station in a defined operational area that is designated as the backup to the LP-1 Station in some operational areas. LP-2 stations are secondary sources of Local Area Emergency EAS Messages. They can also relay National, State, and Weather Alerts.

Participating National (PN) - Most normal broadcasters and cable operators are designated as "PN". These sources are for delivering all levels of EAS to the public.

Non-Participating National (NN) - Broadcasters who hold a NN Authorization from the FCC to sign off the air during a National Emergency.

Emergency Operation Center (EOC) - (State, County, City. etc.) A specifically designed and designated facility within a jurisdiction used for Emergency Operations.

National Warning System (NAWAS) - A dedicated Civil Defense telephone circuit, accessible from specific Local Area Control Point (LACP) and Weather Service officials, the Wyoming Highway Patrol and Wyoming Emergency Management Agency in the State of Wyoming.

National Oceanographic and Atmospheric Administration (NOAA) - NOAA Weather Radio stations are encoding their alerts with the coding that is used for EAS. Broadcasters and cable operators can feed their EAS Decoders with the audio from any normal NOAA Weather Radio receiver, and their EAS Decoder will react just as it does with broadcaster EAS codes.

Local Area Control Point (LACP) - At least one EOC Center with 24-hour answering point, with NAWAS in each area should ultimately have an EAS Encoder to send local alerts to the Area LP-1 station, and all other broadcasters and cable operators that want to receive it directly. If an EAS encoder/decoder can not be procured, a manual call to the LP-1 will be use until such time as it can be implemented at a future date.

# WYOMING STATE EAS OPERATIONAL PLAN

## Operation of the Emergency Alert System

### National Level EAS

In a national emergency, the White House directs activation of the Emergency Alert System (EAS) to provide the President with a means of addressing the public on very short notice. The activation is accomplished by disseminating an Emergency Action Notification (EAN) message via a dedicated network relaying information to control points of the national Primary Entry Point (PEP) network. In addition, radio and TV broadcast networks, telephone common carriers, Associated Press (AP) and United Press International (UPI), are voluntary participants. Non-participating national stations (NN) so designated by the FCC must go off the air. Participating National Stations (PN) and cable systems will continue as outlined in the appropriate checklist and Part 11 of the FCC Rules and Regulations until receipt of an Emergency Action Termination (EAT) message, at which time all stations will resume normal broadcasting. Stations originating emergency communications shall be deemed to have conferred rebroadcast authority (see Appendix C).

### State-Level EAS

The Wyoming EAS is activated by a request from authorized officials to the State's EAS State Primary (Wyoming Emergency Management Agency - WEMA). Local Primary sources in the local EAS area should monitor dissemination of State levels emergency information to all other stations, cable systems and the public.

Activation of the State-Level EAS will be from the following::

Governor

Officer-on-duty, Wyoming Emergency Management

NWS offices with county warning responsibility in Wyoming (pg. 17)

Activation of the State-Level Amber Alert will be by those officials listed as follows:

Division of Criminal Investigation, Officer on Duty.

### Local-Level EAS

Activation of the Local EAS will be by the National Weather Service or officials as designated in the Local Operational Area Plan. Normally, the request would be made by the PSAP (Public Safety Answering Point or NAWAS Warning Point), or directly to the Local Primary (LP1) source serving the affected area(s).

Upon receipt of an (Local) Area EAS request for activation, all broadcast stations and cable systems, who are voluntarily participating may conduct, at the discretion of management, operations in accordance with the provisions of the State EAS or operational area Plan. EAS may be activated for day-to-day emergencies posing a threat to life or property. For unique emergency situations involving local areas, authorities may request EAS activation through the Local Activation of the State-Level EAS will be from the following:

Governor  
Director, Wyoming Emergency Management  
EOC Center in the Local Area  
NWS offices with county warning responsibility in Wyoming (pg. 17)  
Primary (LP) source serving the affected EAS local area.

## **Weather EAS Procedures**

Each NWS office with county warning responsibility in Wyoming will provide EAS activation for specific weather alert messages. These messages are mainly of a WATCH, WARNING or ADVISORY nature (e.g. tornado, severe thunderstorm, flash flood, winter storm, etc.). In addition, NWS offices can provide EAS activation for authorized messages from designated officials listed in this plan.

Dissemination of authorized messages will be directly through NWS NOAA Weather Radio broadcasts and EMWIN (Emergency Manager Weather Information Network).

For unique emergency situations involving local areas, authorities at the county emergency operation center (EOC) may request EAS activation through the LP1 and LP2 stations serving the affected EAS local area.

## **Procedures for Public Officials**

Upon receipt of a State or operational level activation request, all broadcast stations and cable systems may conduct, at the discretion of management, operations in accordance with the provisions of the Wyoming State EAS Plan. Day-to-day emergencies posing a threat to the safety of life and property which would cause activation of the State level EAS include, but are not limited to, floods, heavy snow, high winds, icing conditions, widespread fires, discharge of toxic gases, tornadoes, widespread power failures, industrial explosions, Child Abduction Emergencies and civil disorders. In some instances, a State level EAS activation can be released from the State Primary, which is the state emergency operations center in Cheyenne, Wyoming (WEMA). WEMA will then relay the alert by telephone to the Laramie County EOC to be issued.

*Interim Activation: When the State EOC (WEMA) issues an EAS message from the state emergency operations center, the message will be relayed by the Laramie County EOC. Designated officials will use the following format when contacting the key station(s):*

**“This is \_\_\_\_\_ of \_\_\_\_\_. I request that the Emergency Alert System be activated in the State of Wyoming”** (Followed by a description of emergency situation).

When the authorized person requests activation of the Wyoming State EAS System, they should provide the following information.

\_Who the requesting official is.

\_A call back request, using a number previously provided to the control point or other established authentication procedures.

\_Broadcast details (i.e., live, recorded; immediate or delayed). Program material should be provided covering the following points:

\_What areas are involved, or the entire state.

\_Situation summary (describe the nature of the emergency).

\_Action taken by local governments.

\_Instructions or messages to the public.

(An authorized public official may also activate the EAS through the NWS alerting system.)

## **Procedures for Broadcast and Cable Media**

Upon receipt of a request to activate the EAS at the State level or operational level by civil authority, the operator at the State Primary Source will authenticate and begin recording, if necessary, all emergency messages and proceed as follows:

1. Broadcast the following announcement:

**"We interrupt this program to provide the following emergency instructions."**

2. Transmit the Emergency Alert System header codes and Attention Signal (see Appendix H).
3. Broadcast the following announcement and broadcast the emergency material:

**"We interrupt this program to activate the Emergency Alert System in the State of Wyoming at the request of \_\_\_\_\_. The emergency situation is \_\_\_\_\_ and affects (entire state, portion of state)."**

Repeat nature of emergency to allow time for other broadcasters to respond.

4. Broadcast the emergency information or common program as received from the activating official. Include the source of information and the time received.
5. Repeat as necessary.
6. When received, broadcast Emergency Action Termination by making the following announcement:

**"This concludes emergency programming under the Wyoming State Emergency Alert System. All broadcast stations and cable systems may now resume normal operations."**

\*Actions 3 through 6 should be less than 2 minutes from receipt of message.

7. Send the End of Message (EOM) code (FCC Regulations, Sec. 11.31).
8. Log or record all activity of the EAS system per FCC Regulations (Sec.11.55).

Each broadcast station and cable system, upon receipt of a State Level or operational level emergency action notification will perform, at the discretion of management, the same procedures outlined above. The emergency information may be automatically or manually rebroadcast (FCC Rules, Sec II.51k) from the monitored source or the information may be presented by station personnel.

Television stations shall transmit a visual message containing the Originator, Event, Location, and valid time period of an EAS message. If the message is a video crawl, it shall be displayed at the TOP of the television screen or where it will not interfere with other visual messages. (Requirements for cable systems are outlined in FCC rules, Sec. 11.51g.)

Broadcasters and cable systems have the option of transmitting only the EAS header and EOM codes without the attention signal and emergency announcement. This is acceptable to quickly relay EAS coded

messages through areas unaffected by the emergency.

## **Media EAS Activities**

Monitor the primary station designated as the LP-1 (see Appendix B to Appendix I) for your Operational Area for receipt of any further instructions. When possible, monitor the NOAA Weather Radio frequency serving your area. Where NWR reception is not possible, monitor the state relay network. LP-1 stations should monitor NWR and a State Primary or State Relay frequency and a local public safety frequency, when it is assigned.

## **Media Responsibilities**

The State Primary, State Relay and LP-1 stations should monitor the NP/SP to provide the required national EAS link to the system.

A procedure should be developed by the stations for discontinuing normal operations and broadcasting the alert message, live or recorded either automatically or manually as permitted in the rules (FCC rules, Sec. 11.51)

After receiving notification of the termination of the State-level EAS, participating media may resume regular operations in accordance with their authorization (see EAS Checklist). During emergencies, operation outside normal parameters is allowed. Such operations should be logged.

Each station should insure that required EAS equipment is properly installed and programmed with appropriate event codes.

## **Tests**

Assure that EAS equipment is operating properly.

1. All stations are required to record information relevant to all EAS tests (FCC rules, Sec 11.61); AM stations should refer to 73.1250.
2. All stations (except Class D FM and Low Power television) must transmit, once a week at random days and times, a Required Weekly Test (RWT) consisting of EAS Header Codes and EOM codes.
3. All stations must transmit a required monthly test (RMT) consisting of EAS Header Codes, Attention Signal, Test Script, and EOM code within 15 minutes of receipt of a test from a Local or State Primary source (Class D FM and Low Power TV transmit only the test script).

Tests of State Emergency Alert facilities, as coordinated between the Wyoming SECC Chair and State officials, shall be on a random or scheduled basis from a point which would originate the common emergency program.

4. The following requirements regarding both RWT's and RMT's apply to all cable operators and all broadcasters, "PN", as well as "NN" stations. Even stations that have elected not to participate in local EAS alerts, must still rebroadcast their local RMT every month. There are two exceptions to these rules. First, Class "D" FM and LPTV stations need not have an EAS Encoder. They must have an EAS Decoder. Thus, these stations are exempt from running the weekly digital code RWT test. However, they must retransmit monthly RMT tests as outlined below, minus the EAS Header Codes and Attention

Signal. In addition, LPTV stations must present all EAS information visually, just as all other TV stations must do. The second exception is for FM Translator and TV Translator stations, which are not required to have any EAS equipment.

### **Required Weekly Test (RWT)**

1. Transmission: All broadcasters and cable operators must transmit an RWT once each week at random days and times except for the week of the RMT test. There are no time-of-day restrictions. This is a 10.5-second test, consisting only of the EAS Header and End-of-Message Codes.
2. Reception: All broadcasters and cable operators receiving a RWT from one of their monitored sources must log receipt of this test from their one or two required monitored sources. No further action is required.

### **Required Monthly Test (RMT)**

1. Transmission: RMT's are to be initiated by the SR, and LP-1 and LP-2 stations. During some months, the test will actually be initiated by the 911-Center or Emergency Operation Center associated with these stations in this State Plan. During the designated week for this test, all other broadcasters and cable operators are to wait for this test and then react as described in (4.) below. These tests shall always use the Event Code "RMT", never codes such as "State Test", or "Local Area Test", etc.
2. Scheduling of RMT's / Week and Time-of-Day:
  - RMT's shall always occur during the first, full, Sunday-thru-Saturday week of the month.
  - Time frame and origination of the RMT tests shall adhere to the following format:

MONTH	TIME FRAME	STN.	ORIGINATING SOURCE
JANUARY	DAY / 8:30 AM to Local Sunset	LP	LP-1
FEBRUARY	NIGHT / Local Sunset to 8:30 AM	LP	LP-1
MARCH	DAY / 8:30 AM to Local Sunset	LP	LP-1
APRIL	NIGHT / Local Sunset to 8:30 AM	LP	LP-1
MAY	DAY / 8:30 AM to Local Sunset	LP	LP-1
JUNE	NIGHT / Local Sunset to 8:30 AM	LP	LP-1
JULY	DAY / 8:30 AM to Local Sunset	LP	LP-1
AUGUST	NIGHT / Local Sunset to 8:30 AM	LP	LP-1
SEPTEMBER	DAY / 8:30 AM to Local Sunset	LP	LP-1
OCTOBER	NIGHT / Local Sunset to 8:30 AM	LP	LP-1
NOVEMBER	DAY / 8:30 AM to Local Sunset	LP	LP-1
DECEMBER	NIGHT / Local Sunset to 8:30 AM	LP	LP-1

### **NOTES:**

LP = Test will come from the Local Primary station that you monitor.

Wyoming STATE EOC = The State EOC will send the RMT at its discretion.

The LP and PN stations must then rebroadcast this test within 15 minutes of receiving it.

3. Scheduling of RMT's/Recommended Time Constraints:

LP stations, and the State EOC are requested to use judgment in the scheduling of times for RMT's. Since all broadcasters and cable operators are required to rebroadcast this test within 60 minutes of receiving it, care should be taken to not put undue hardship on TV broadcasters in particular, when they are carrying their highest-revenue programming. On a daily basis, these periods would include all major newscasts: early morning, noontime, evening, and late evening. In addition, the times of major events are recommended to be avoided, such as: pre-planned Presidential speeches, hours of a major national or local news story carried outside of normal newscast hours, local and national election coverage, and major sporting events like World Series games and the Super Bowl.

Broadcasters and cable operators who have a complaint regarding the scheduling of RMT's in their area should make their concerns known to their area Chair (see "The Wyoming SECC" section in this Plan for names). If a satisfactory resolution is not reached at that level, the State EAS Chairs should be contacted.

4. Reception/ re-transmission of RMT's

All broadcasters and cable operators receiving an RMT test must re-transmit this test within 60 minutes of receiving the test. [For Daytime-only stations receiving nighttime RMT, this test must be re-transmitted within 60 minutes of the Daytime-only station's sign-on.] Transmission of this RMT test takes the place of the Required Weekly Test (RWT). Times should be logged for both the receipt and re-transmission of the RMT test. Broadcast and cable management should impress upon their staff that re-transmission of this test is not an option. It is a FCC violation to fail to re-transmit this test within 60 minutes of receiving it. The best policy may be to set your EAS unit for a 60-minute automatic countdown upon receiving an RMT. If the operator on duty does not send the test manually within that window, the box will do it for him when time runs out. If it is not possible to retransmit the RMT upon sign on, transmit an RWT in place of the RMT. As there are several LP's in the state monitoring stations outside of their Operational Area there is an exception to this rule. A RMT received from outside your Operational Area does not need to be forwarded. It should be properly logged and a comment that it is outside of the stations Operational Area should be made in the log.

5. Time-Duration and County-Location Codes to be used

TIME-DURATION codes used in the EAS Header Code for all EAS Tests shall be "30 MINUTES.

COUNTY-LOCATION codes used in the EAS Header Code for EAS Tests shall conform to these guidelines:

6. Miscellaneous

SP & SR Stations: All tests, RWT and RMT, shall use the Location Code for the entire state.

LP Stations: All tests, RWT and RMT, shall include the Location Code for all counties in that LP station's Local Area of responsibility. To determine the counties in their Local Area of responsibility, each LP station should consult the "Boundary Map of Wyoming EAS Local Areas", and/or the cover sheet for the "FCC Mapbook", both found in the Appendix of this Plan. Under the new EAS Plan, some counties have been moved compared to the old EBS Plan. Please read carefully.

PN and NN Stations and Cable Operators: RMT tests shall be re-transmitted unchanged, except for the "L-Code". Thus, RMT's will include all counties present in the original message. For the RWT originated each week by each PN and NN station, and each cable operator, the county-location code used shall be the county for the broadcaster's City of License, or cable operator's Community of License. Other counties in the station's/system's service area may be added at management discretion.

## Wyoming EAS Test Scripts and Formats

The following test scripts and formats shall be used by all Wyoming broadcasters, cable operators, and emergency agencies when originating EAS tests.

1. RWT: No script is used for the RWT. Entire test takes 10.5 seconds. Format is as follows:
  - Stop regular programming
  - one-second pause
  - Send EAS Header Code 3 times
  - one-second pause
  - Send EAS End-of-Message Code 3 times
  - one-second pause
  - Resume normal programming
  
2. RMT: LP stations, and emergency agencies originating this test should use the following format. All other broadcasters and cable operators will receive the test in this format, and must re-transmit it within 60 minutes in the same format. Format is as follows:
  - Stop regular programming
  - Optional Intro: **“This is a test of the (Local Area) Wyoming Emergency Alert System.”**
  - one-second pause
  - Send EAS Header Code 3 times (All sources must use Event Code “RMT” for this test.)
  - one-second pause
  - Send EAS Attention Signal (8 to 25 seconds)
  - Read Test Script: **“This is a test of the (Local Area) Wyoming Emergency Alert System. In the event of an emergency, this system would bring you important information. This test is now concluded.”**
  - one-second pause
  - Send EAS End-of-Message Code 3 times
  - one-second pause
  - Resume normal programming

Timing Note: The script above can be read in 9-10 seconds. All other elements of the RMT (the Header Codes and an 8-second Attention Signal) take from 19-21 seconds to complete (that length depending on the number of county codes contained in the Header). The goal of writing this short script was to fit the entire test into a 30-second time period. LP stations, and emergency agencies should make every attempt to complete this test within 30 seconds. Pre-recording the script at the length needed to achieve this goal would probably be helpful.

Script Note: (Local Area) = LP’s: Use the name of your Local Area found in Appendix I. SP’s use the phrase, “State of Wyoming”.

**LIST OF THOSE WITH THE AUTHORITY TO ACTIVATE  
THE WYOMING STATE EAS SYSTEM**

**GOVERNOR**

Dave Freudenthal ..... (307)777-7434

**DIRECTOR, WYOMING EMERGENCY MANAGEMENT AGENCY**

..... (307)777-4900

**METEOROLOGIST-IN-CHARGE, NATIONAL WEATHER SERVICE**

William T. Parker, Cheyenne..... (307)772-2468 Ext. 642

Joseph B. Sullivan, Riverton .....(307)857-3898

Larry Dunn, Salt Lake City.....(801)524-5154 ext 222

David M. Carpenter, Rapid City.....(605) 341-9271

Keith Meier, Billings, MT.....(406) 652-0851

**WARNING COORDINATION METEOROLOGISTS, NATIONAL WEATHER SERVICE**

John R.Griffith, Cheyenne .....(307) 772-2468 ext 726

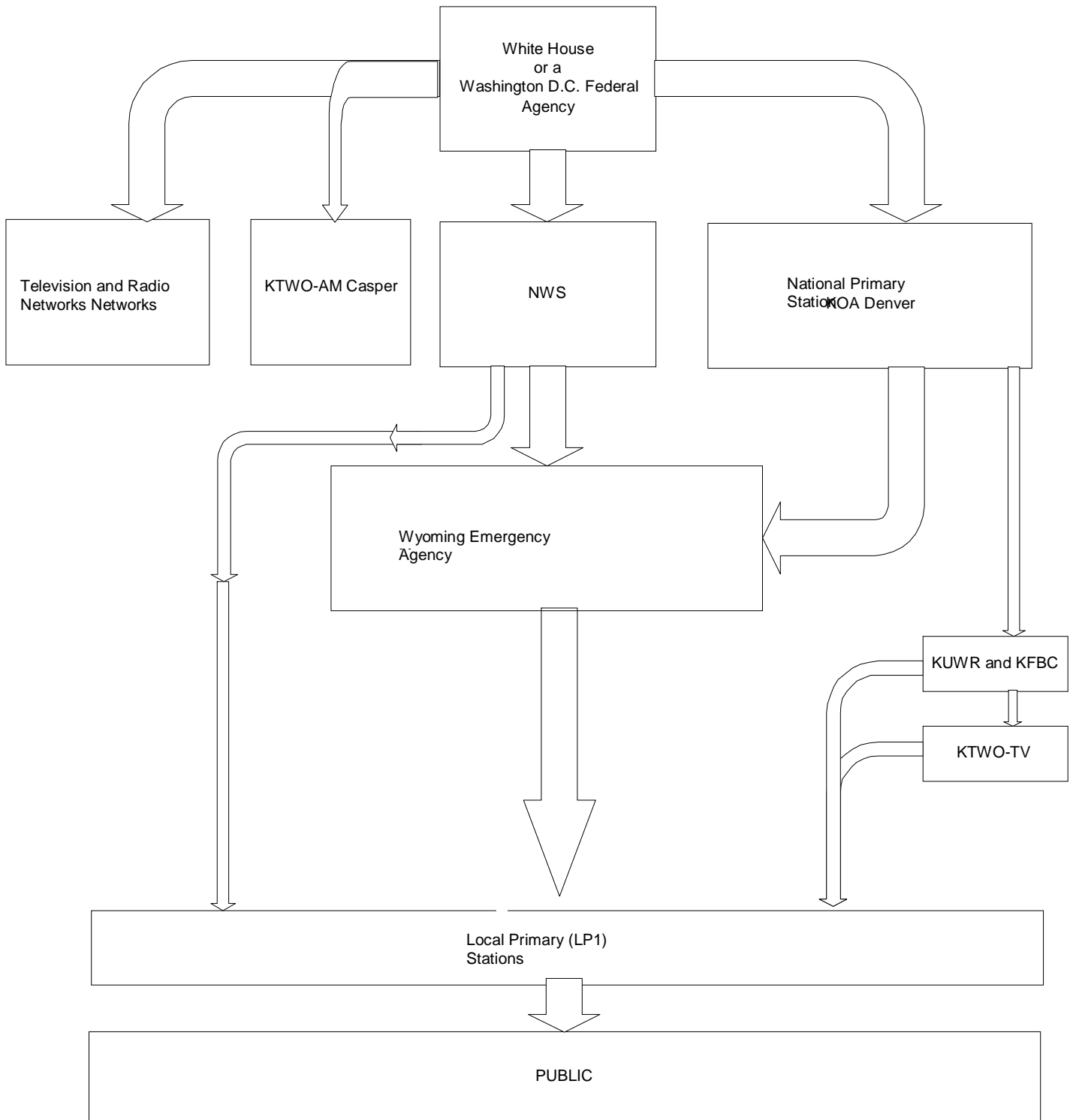
Christopher N. Jones, Riverton.....(307) 857-3898

Susan K. Sanders, Rapid City, SD ..... (605) 341-9271

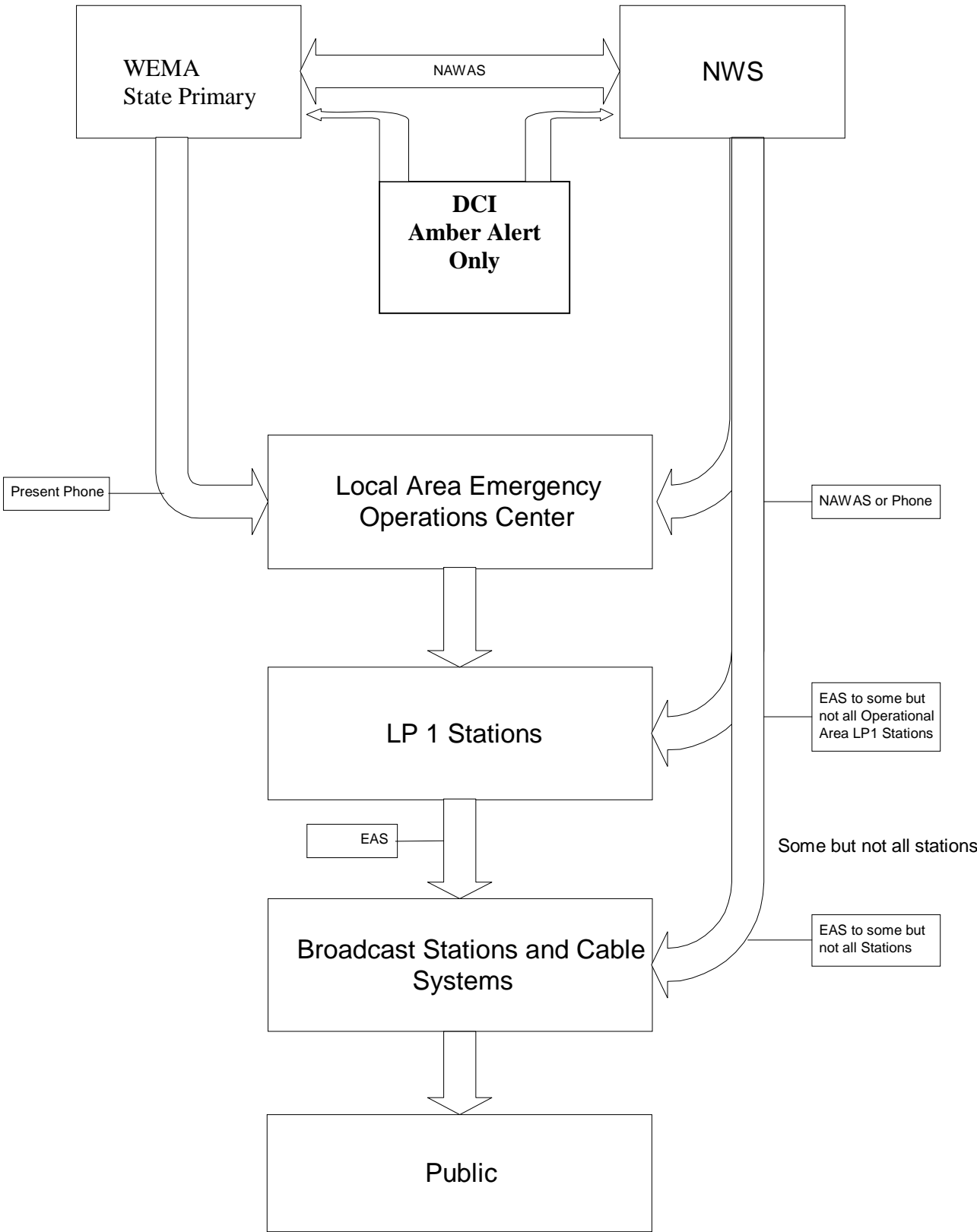
James Scarlett, Billings, MT.....(406) 652-0851

David Toronto, Salt Lake City, UT.....(801) 524-5113

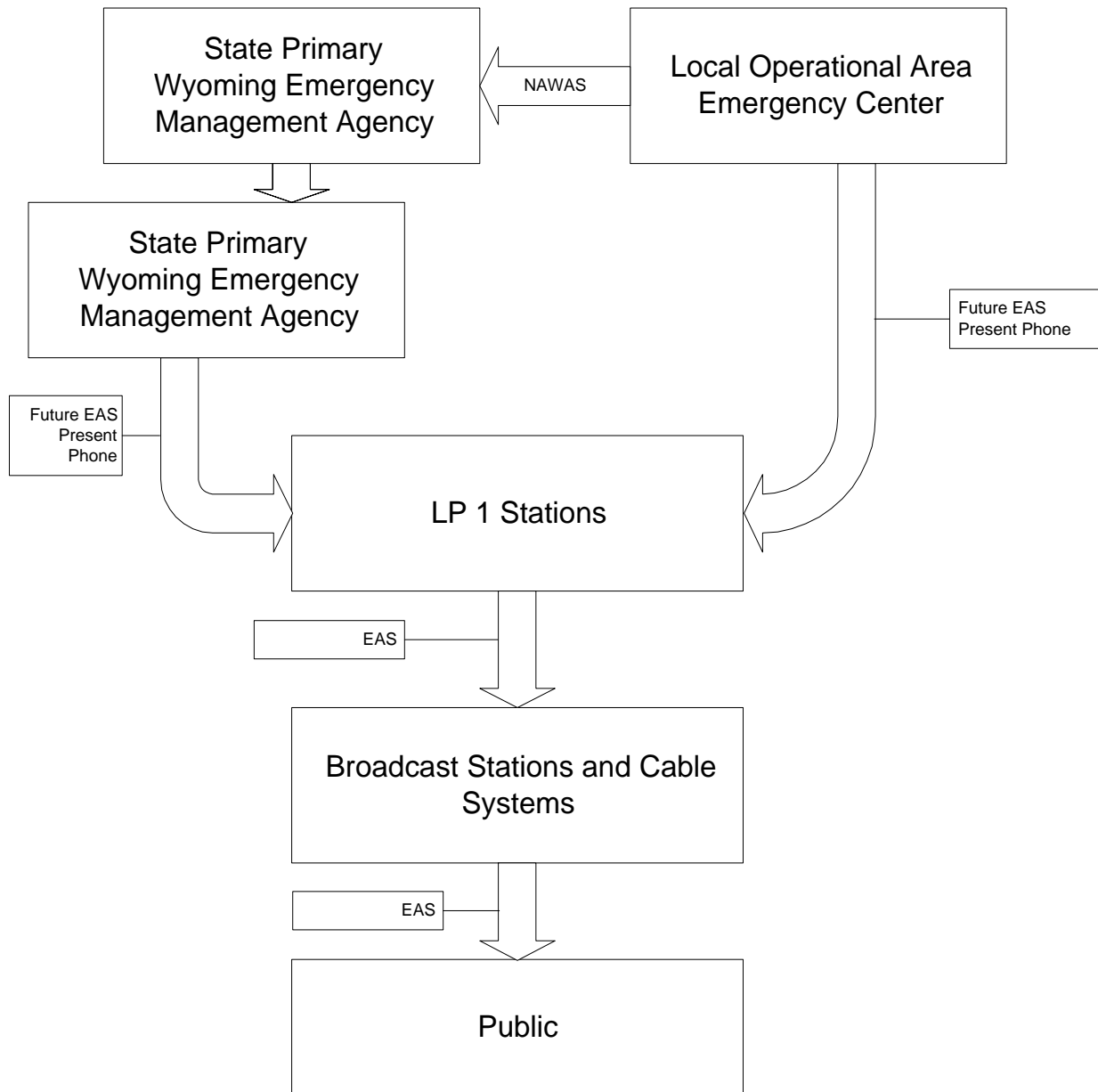
# National Level Activation



# State Level Activation



# Local Level Activation

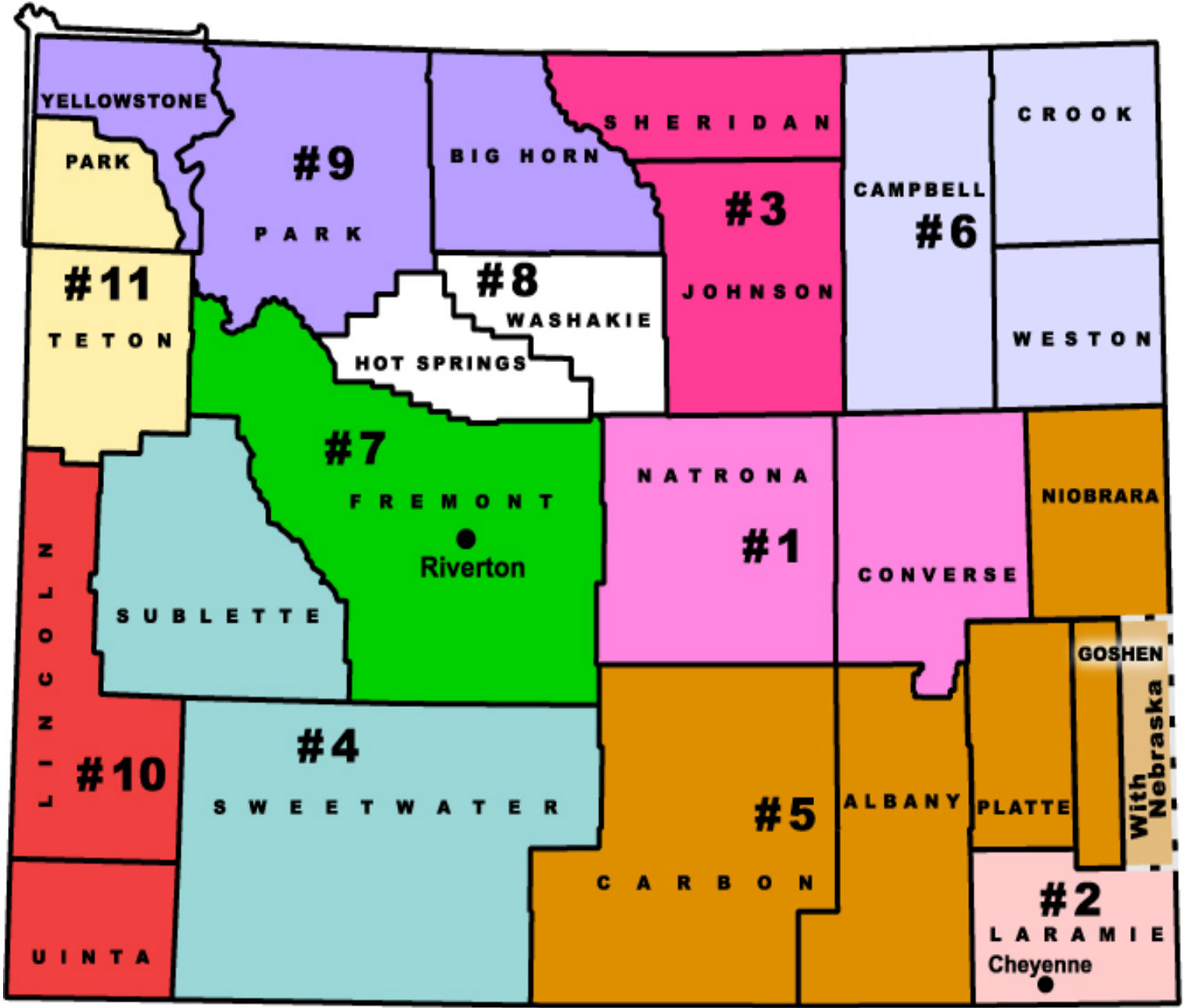


## National Weather Service Wyoming Signal Distribution

See attached map

Cheyenne	162.550 MHz	Afton	162.425 MHz
Casper	162.400 MHz	Cody	162.400 MHz
Lander	162.475 MHz	Cedar Mtn.	162.525 MHz
Sheridan	162.475 MHz	Copper Mtn.	162.425 MHz
Rawlins	162.425 MHz	Glendo Resv	162.450 MHz
Rock Springs	162.550 MHz	Terry Peak, SD	162.525 MHz
N. of Evanston	162.450 MHz		
Jackson	162.400 MHz		

## Wyoming State EAS Operational Areas



## EAS Header Code Analysis

An EAS Header Code contains the following elements, sent in the following sequence:

- [Preamble] ZCZC-ORG-EEE-PSSCCC+TTTT-JJHHMM-LLLLLLLL-
- Attention Signal
- Aural, Visual, or Text Message
- [Preamble] NNNN

[Preamble] = (Clears the system) - Sent automatically by the Encoder.

ZCZC = (Start of ASCII Code) - Sent automatically by the Encoder.

ORG = (Originator Code) - Preset once by user, then sent automatically by the Encoder. See following Section (B.) for code you must use.

EEE = (Event Code) - Determined by user, each time an alert is sent. See following Appendix H for the codes to be used in Wyoming.

PSSCCC = (County-Location Code) - Determined by user, each time an alert is sent. See following Appendix H for the assigned codes of all Wyoming counties.

TTTT = (Duration of Alert) - Determined by user, each time an alert is sent.

JJHHMM = (Date/Time-of-Day) - Sent automatically by the Encoder.

LLLLLLLL = (8-Character ID, Identifying the Broadcaster, Cable TV, Weather Service Office, Nuclear/Industrial Plant, or Civil Authority operating that Encoder.) Preset once by user, then sent automatically by the Encoder. See following below for the format to be followed by all users in constructing their "L-Code".

Attention Signal - Must be sent if aural, visual, or text message is sent.

[Preamble] = (re-clears the system) - Sent automatically by the Encoder when the End-of-Message sequence is initiated.

NNNN = (End-of-Message Code) - Must be initiated manually at the end of every EAS Alert originated by all sources. A failure of the system will occur if this code is not sent to reset the Decoders of all stations/operators that carried that alert.

# Wyoming Originator Codes

## Wyoming Originator Codes Dakota Originator Codes

Following are the Originator Codes for State activation of the EAS.

WXR - To be used by National Weather Service Offices.

CIV - To be used by Emergency Government, Sheriffs, and all other Civil Authorities.

EAS - To be used by all Broadcasters and Cable TV Operators.

Whether used under the authority of the State EAS Plan, or any of the County/Local Area EAS Plans, the following are the Event Codes to be used in the State of Wyoming. No codes can be added without FCC approval. County/Local Area EAS Plans that desire to use a code not on this list should submit that code request to the Wyoming Association of Broadcasters for SECC and FCC approval and subsequent addition to this list. This list will be maintained as a "Master List" for all Event Codes used in the State of Wyoming.

### Wyoming "L-Code" Formats

This 8-character code is affixed to every EAS message originated or re-transmitted by every EAS Encoder. The code identifies the particular broadcaster, cable operator, Weather Service Office, nuclear/industrial plant, or civil authority operating that Encoder. "L-Code" ID's must adhere to the following formats. No deviation from these formats is allowed, since using certain other characters would cause an error in the system.

### Broadcasters:

Single Station: "KXXX(FM)

Two Stations: "KXXXKYYY"

Three or more Stations: The call letters of one of the stations or the abbreviated name of the parent company is sufficient. All other stations sending the alert should keep a log of alerts sent, as should the I'D station. (Per FCC)

### Cable TV:

(To be determined by the to-be-named SECC Cable TV Chair.)

# Weather Service Offices

Use the NWS office's location identifier, followed by a "/" and the letters NWS.

<u>Examples:</u>	Cheyenne	KCYS/NWS
	Riverton	KRIW/NWS
	Rapid City	KUNRNWS
	Billings	KBYZ/NWS
	Salt Lake City	KSLC/NWS

**Civil Authorities:** This code uses three components in constructing its 8-character code: Portion of "L-Code"  
Source of Characters

**State:** Office of the Governor = WYO GOV  
Wyoming Emergency Management Agency = WEMA

**Local Government:**

First four characters = First four letters of name of jurisdiction (Name of County, City, etc.)

Next two characters = Abbreviation for type of jurisdiction:

For County use "CO"

For City use "CY"

For Town use "TN"

For Village use "VL"

For Township use "TP"

For Municipality use "MY"

Last two Characters = Abbreviation for type of agency:

For Sheriff use "SH"

For Fire Dept. use "FD"

For Police Dept. use "PD"

For Traffic Authority use "TA"

For Emergency Services use "ES"

For Emergency Management use "EM"

Examples: Laramie County Sheriff = "LARACOSH", City of Casper Police = "CASPCYPDWyoming County-Location Codes ("PSSCCC")

The first digit ("P") can be used to indicate one-ninth of the county code it precedes, using the following pattern  
There are no FCC-Approved Special Wyoming Event Codes at this time.

## ORIGINATOR AND EVENT CODE TRANSLATIONS

Originator Codes:

Org. Code	English Translation
EAS	Broadcast Station or Cable System
EAN	National Emergency Action Notification Network
CIV	Civil Authority
WXR	The National Weather Service
PEP	Primary Entry Point

Event Code	English Translation	Model 943 Event Code No.	Event Code	English Translation	Model 943 Event Code No.
EAN	National Emergency Action Notification	N/A	HWA	High Wind Watch	21
EAT	National Emergency Action Termination	N/A	HWW	High Wind Warning	22
NIC	National Information Center Message	N/A	HUA	Hurricane Watch	23
NPT	National Periodic Test	N/A	HUW	Hurricane Warning	24
RMT	Required Monthly Test	33	HLS	Hurricane Statement	25
RWT	Required Weekly Test	34	LEW	Law Enforcement Warning	26
ADR	Administrative Message	1	LAE	Local Area Emergency	27
AVA	Avalanche Watch	2	NMN	Network Message Notification	28
AVW	Avalanche Warning	3	TOE	911 Telephone Outage Emergency	29
BZW	Blizzard Warning	4	NUW	Nuclear Power Plant Warning	30
CAE	Child Abduction Emergency	5	DMO	Practice/Demo Warning	31
CDW	Civil Danger Warning	6	RHW	Radiological Hazard Warning	32
CEM	Civil Emergency Message	7	SVA	Severe Thunderstorm Watch	35
CFA	Coastal Flood Watch	8	SVR	Severe Weather Warning	36
CFW	Coastal Flood Warning	9	SVS	Severe Weather Statement	37
DSW	Dust Storm Warning	10	SPW	Shelter in Place Warning	38
EQW	Earthquake Warning	11	SMW	Special Marine Warning	39
EVI	Immediate Evacuation Notice	12	SPS	Special Weather Statement	40
FRW	Fire Warning	13	TOA	Tornado Watch	41
FFW	Flash Flood Warning	15	TOR	Tornado Warning	42
FFS	Flash Flood Statement	16	TRA	Tropical Storm Watch	43
FLA	Flood Watch	17	TRW	Tropical Storm Warning	44
FLW	Flood Warning	18	TSA	Tsunami Watch	45
FLS	Flood Statement	19	TSW	Tsunami Warning	46
HMW	Hazardous Materials Warning	20	VOW	Volcano Warning	47
			WSA	Winter Storm Watch	48
			WSW	Winter Storm Warning	49

## Wyoming County-Location Codes ("PSSCCC")

The first digit ("P") can be used to indicate one-ninth of the county code it precedes, using the following pattern:

0 = Entire County

1 = NW	2 = NC	3 = NE
4 = WC	5 = C	6 = EC
7 = SW	8 = SC	9 = SE

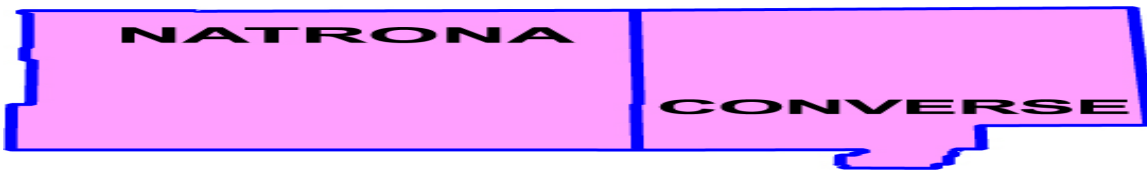
Examples: for all of Natrona County, the Location code would be "056025". Most County-Location Codes in the state of Wyoming will be constructed to indicate the entire County.

### STATE OF WYOMING COUNTY CODES

**State of Wyoming (used to activate the entire state)**                      **56000**

Albany County	56001
Big Horn County	56003
Campbell County	56005
Northern Campbell County NWS	256005
Central Campbell County NWS	556005
Southern Campbell County NWS	856005
Carbon County	56007
Converse County	56009
Crook County	56011
Fremont County	56013
Goshen County	56015
Hot Springs County	56017
Johnson County	56019
Laramie County	56021
Lincoln County	56023
Natrona County	56025
Niobrara County	56027
Park County	56029
Platte County	56031
Sheridan County	56033
Sublette County	56035
Sweetwater County	56037
Teton County	56039
Uinta County	56041
Washakie County	56043
Weston County	56045
Yellowstone National Park (Uses Park County)	56029

# WY EAS Area 1



## Natrona/Converse Local Area

Local Area 1

(This Area includes the towns and cities within Natrona and Converse Counties. Casper, Evansville, Mills, Bar Nunn, Midwest, Edgerton, Alcova, Douglas, Glenrock, )

Station	Location	Frequency	EAS Designation	Primary EAS Assignment	Secondary EAS Assignment	Other Assignment
KTWO-AM	CASPER	1030 KHZ	LP1	NOAA	KUWR	LOAPC & Natrona EOC
KTWO-TV	CASPER	Ch. 2	LP2	LP1	NOAA	LOAPC
KCWY TV	MILLS	Ch. 13	PN	LP1	NOAA	
KASS-FM	CASPER	106.9 MHZ	PN	LP1	NOAA	
KCSP-FM	CASPER	90.3 MHZ	PN	LP1	NOAA	
KCWC-TV	CASPER	CH. 6	PN	LP1	NOAA	
KFNB-TV	CASPER	CH. 20	PN	LP1	NOAA	
KGWN-TV	CASPER	CH. 14	PN	LP1	NOAA	
KHOC-FM	CASPER	102.5 MHZ	PN	LP1	NOAA	
KKTY-AM	DOUGLAS	1470 KHZ	PN	KWYY	NOAA	
KKTY-FM	DOUGLAS	99.3 MHZ	PN	KWYY	NOAA	
KMGW-FM	CASPER	94.5 MHZ	PN	LP1	NOAA	
KMLD-FM	CASPER	97.3 MHZ	PN	LP1	NOAA	
KQLT-FM	CASPER	103.7 MHZ	PN	LP1	NOAA	
KRVK-FM	MIDWEST	107.9 MHZ	PN	LP1	NOAA	
KKTL AM	CASPER	1400 KHZ	PN	LP1	NOAA	
KTRS-FM	CASPER	104.7 MHZ	PN	LP1	NOAA	
KUYO-AM	EVANSVILLE	830 KHZ	PN	LP1	NOAA	
KVOC-AM	CASPER	1230 KHZ	PN	LP1	NOAA	
KYOD-FM	DOUGLAS	100.1 MHZ	PN	KWYY	NOAA	
KWYY-FM	CASPER	95.5 MHZ	PN	LP1	NOAA	
AT & T Broadband	CASPER	Cable	PN	LP1	KTWO TV	
Communicom	DOUGLAS	Cable	PN	KWYY	EOC BY PHONE	

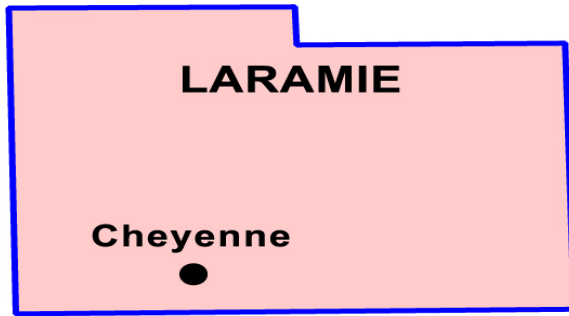
## Natrona/Converse Local Area

Local Area 1

County	Authority to Activate	Phone Number
Natrona	Sheriff's Office	(307) 235-9282
Converse	Sheriff's Office	(307) 358-4700

NOTE: Please contact the Sheriff's Office in order to contact the county Emergency Management Coordinator.

# WY EAS Area 2



## Laramie Local Area

Local Area 2

(This Area includes the towns and cities within Laramie County, Cheyenne and Pine Bluffs.

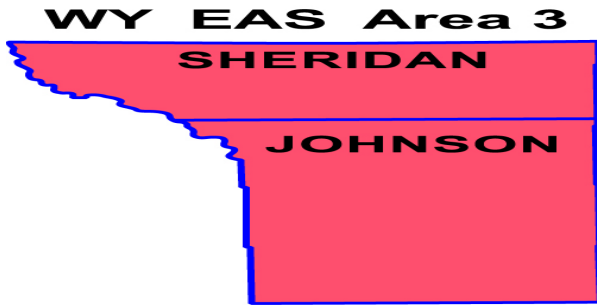
Station	Location	Frequency	EAS Designation	Primary EAS Assignment	Secondary EAS Assignment	Other Assignment
KFBC-AM	CHEYENNE	1240 KHZ	LP1	NOAA	LP2	KOA-AM (Denver NP) KUWR
KOLZ-FM	CHEYENNE	100.7 MHZ	LP2	LP1	NOAA	
KQLF	CHEYENNE	97.9 MHZ	PN	LP2	NOAA	KUNC
KGWN-TV	CHEYENNE	CH. 5	PN	LP1	LP2	
KKTU-TV	CHEYENNE	CH. 33	PN	LP1	NOAA	KTWO AM
KLEN-FM	CHEYENNE	106.3 MHZ	PN	LP1	NOAA	
KLWY-TV	CHEYENNE	CH. 27	PN	KTWO AM	NOAA	
KIGN FM	BURNS	101.9 MHZ	PN	LP1	NOAA	
KRAE-AM	CHEYENNE	1480 KHZ	PN	LP1	LP2	NOAA
KJUA AM	CHEYENNE	1380 KHZ	PN	LP1	LP2	NOAA
KRND AM	CHEYENNE	1630 KHZ	PN	LP1	LP2	NOAA
KGAB-AM	CHEYENNE	650 KHZ	PN	LP1	NOAA	
KKPL	CHEYENNE	99.9 MHZ	PN	LP2	NOAA	KUNC
KRRR	CHEYENNE	104.9 MHZ	PN	LP1	LP2	NOAA
KWYC FM	CHEYENNE	90.3 MHZ	PN	LP1	LP2	
KREO	PINE BLUFFS	105.3 MHZ	PN	LP1	LP2	NOAA
KKAW	ALBIN	107.3 MHZ	PN	LP2	NOAA	
AT & T Broadband	CHEYENNE	Cable	PN	LP1	LP2	NOAA
Pine Bluffs Community TV System	PINE BLUFFS	Cable	PN	KGWN TV Channel 5	LP2	

## Laramie Local Area

Local Area 2

NOTE: Please contact the Sheriff's Office in order to contact the county Emergency Management Coordinator

County	Authority to Activate	Phone Number
Laramie	Sheriff's Office	(307) 633-4711



## Sheridan/Johnson County Local Area

Local Area 3

(This Area includes the towns and cities within Sheridan and Johnson Counties. Sheridan, Ranchester, Dayton, Story, Buffalo, Kaycee, and Barnum.)

Station	Location	Frequency	EAS Designation	Primary EAS Assignment	Secondary EAS Assignment	Other Assignment
KLGT-FM	BUFFALO	92.9 MHZ	LP1	NOAA AND EOC VIA PHONE	KUWR	KZWY FM
KZZS FM	STORY	98.3 MHZ	PN	NOAA AND EOC BY PHONE	KUWR	KZWY FM
KBBS-AM	BUFFALO	1450 KHZ	PN	NOAA AND EOC BY PHONE	KUWR	KZWY FM
KWYO-AM	SHERIDAN	1410 KHZ	PN	LP1	NOAA	
KROE-AM	SHERIDAN	930 KHZ	PN	LP1	NOAA	
KZWY-FM	SHERIDAN	94.9 MHZ	PN	LP1	NOAA	
KSGW-TV	SHERIDAN	CH. 12	PN	LP1	NOAA	
KYTI FM	SHERIDAN	93.7 MHZ	PN	LP1	NOAA	
AT & T Broadband	SHERIDAN	Cable	PN	KYTI	KROE AM	
AT & T Broadband	BUFFALO	Cable	PN	KBBS	KROE AM	

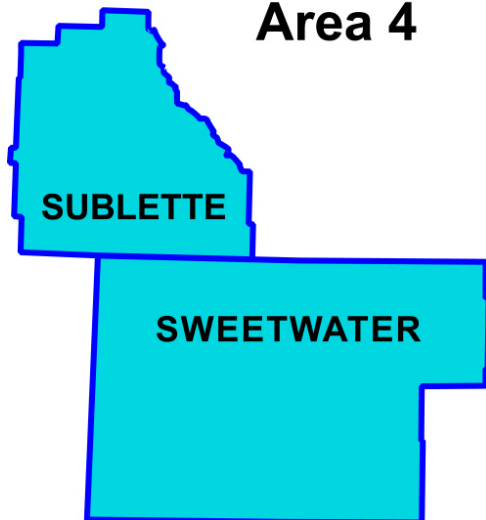
## Sheridan/Johnson County Local Area

Local Area 3

NOTE: Please contact the Sheriff's Office in order to contact the county Emergency Management Coordinator

County	Authority to Activate	Phone Number
Sheridan	Sheriff's Office	(307) 672-3453
Johnson	Sheriff's Office	(307) 684-5581

# WY EAS Area 4



## Sweetwater Local Area Local Area 4

(This Area includes the towns and cities within Sweetwater County. Rock Springs, Green River, Wamsutter and Reliance.)

Station	Location	Frequency	EAS Designation	Primary EAS Assignment	Secondary EAS Assignment	Other Assignment
KRKK-AM	ROCK SPRINGS	1360 KHZ	LP1	EOC VIA PHONE	LP2	SR/KTWO-TV
KYCS-FM	GREEN RIVER	95.1 MHZ	LP2	LP1A QSW	NOAA	
KFRZ-FM	GREEN RIVER	92.1 MHZ	PN	LP1A QSW	NOAA	
KUGR-AM	GREEN RIVER	1490 KHZ	PN	LP1A QSW	NOAA	
KGWR-TV	ROCK SPRINGS	CH 13	PN	KTWO AM	NOAA	
KPIN-FM	PINEDALE	101.1 MHZ	PN	KUWX	NOAA	
QSW-FM	ROCK SPRINGS	96.5 MHZ	LP1A	LP1	LP2	
KSIT-FM	ROCK SPRINGS	104.5 MHZ	PN	LP1	LP2	
KUWZ-FM	ROCK SPRINGS	90.5 MHZ	PN	LP1	LP2	
Sweetwater Cable	ROCK SPRINGS GREEN RIVER	Cable	PN	LP1	LP2	

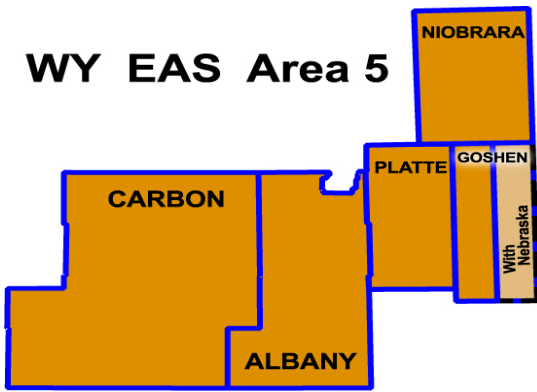
## Sweetwater Local Area

Local Area 4

NOTE: Please contact the Sheriff's Office in order to contact the county Emergency Management Coordinator

County	Authority to Activate	Phone Number
Sweetwater	Sheriff's Office	(307) 872-6350
Sublette	Sheriff's Office	(307) 367-4378

# WY EAS Area 5



## Albany/Carbon/Platte/Goshen Niobrara County Local Area

### Local Area 5

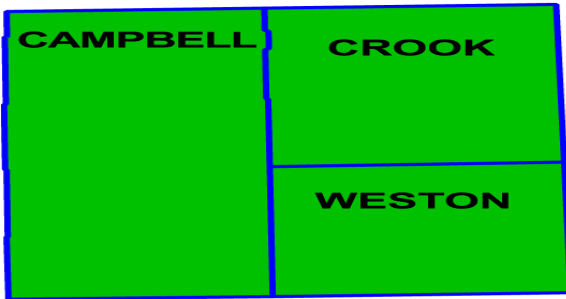
(This Area includes the towns and cities within Albany and Carbon Counties. Laramie, Centennial, Woods Landing, Rock River, Rawlins, Sinclair, Hanna, Medicine Bow, Saratoga, Encampment, Shirley Basin, Chugwater, Torrington, Lingle, Fort Laramie, Guernsey, Lusk and Lamont.)

Station	Location	Frequency	EAS Designation	Primary EAS Assignment	Secondary EAS Assignment	Other Assignment
KUWR-FM	LARAMIE	91.9 MHZ	LP1	NOAA AND EOC BY PHONE	KOLZ-FM	KOA-AM
KOWB-AM	LARAMIE	1290 KHZ	PN	LP1	NOAA	
KHAT	LARAMIE	96.7 MHZ	PN	LP1	NOAA	
KCGY-FM	LARAMIE	95.1 MHZ	LP2	LP1	NOAA	
KFNR-TV	RAWLINS	CH 11	PN	KTWO AM	NOAA	
KIMX-FM	LARAMIE	105.5 MHZ	PN	LP1	NOAA	
KIQZ-FM	RAWLINS	92.7 MHZ	PN	LP1	NOAA	
KLDI-AM	LARAMIE	1210 KHZ	PN	LP1	NOAA	
KRAL-AM	RAWLINS	1240 KHZ	PN	LP1	NOAA	
KRQU-FM	LARAMIE	102.9 MHZ	PN	LP1	NOAA	
KYCN-AM	WHEATLAND	1340 KHZ	PN	NOAA/EOC	KUWR	
KGOS AM	TORRINGTON	1490 KHZ	PN	LP2	NOAA	KOLT Scottsbluff
KERM FM	TORRINGTON	98.3 MHZ	PN	LP2	NOAA	KOLT Scottsbluff
KZEW FM	WHEATLAND	101.7 MHZ	PN	NOAA/EOC	KUWR	
AT & T Broadband	Rawlins	Cable	PN	LP1	LP2	
Pine Bluffs Community TV System	Guernsey	Cable	PN	KGWN TV Channel 5	KSTF Channel 10	
AT & T Broadband	Laramie	Cable`	PN	LP1	LP2	
CommuniCo mm Services	Encampment	Cable	PN	LP1	LP2	
CommuniCo mm Services	Saratoga	Cable	PN	LP1	LP2	
CommuniCo mm Services	Hanna	Cable	PN	LP1	LP2	
CommunicC om Services	Torrington	Cable	PN	LP1	KERM FM	
CommunicC om Services	Wheatland	Cable	PN	LP1	LP2	
CommuniCo m Services	Lusk	Cable	PN	KZEW FM	LP2	
Pine Bluffs Community TV System	Ft. Laramie	Cable	PN	KGWN TV Channel 5	KSTF Channel 10	

**Albany/Carbon County Local Area NOTE:** Please contact the Sheriff's Office in order to contact the county Emergency Management Coordinator  
Local Area 5

<b>County</b>	<b>Authority to Activate</b>	<b>Phone Number</b>
Albany	Sheriff's Office	(307) 721-5322 After Hrs. Dispatch (307) 721-2526
Platte	Sheriff's Office	(307) 322-2331
Goshen	Sheriff's Office - (307) 532-4026	After Hrs. Torington PD Dispatch (307) 532-7001
Niobrara	Sheriff's Office	(307) 334-2240
Carbon	Sheriff's Office	(307) 324-2776

## WY EAS Area 6



### Campbell/Crook/Weston County Local Area

Local Area 6

(This Area includes the towns and cities within Campbell, Crook and Weston Counties. Gillette, Wright, Moorcroft, Sundance, Upton and Newcastle.)

Station	Location	Frequency	EAS Designation	Primary EAS Assignment	Secondary EAS Assignment	Other Assignment
KIML-AM	GILLETTE	1270 KHZ	LP1	NOAA Gillette	EOC/UHF	KZWY FM
KAML-FM	GILLETTE	96.9 MHZ	LP1A	NOAA	EOC	KZWY FM
KGWY-FM	GILLETTE	100.7 MHZ	LP1B	NOAA	EOC	KZWY FM
KASL-AM	NEWCASTLE	1240 KHZ	PN	LP1B	NOAA Newcastle	
KYDT-FM	SUNDANCE	103.1 MHZ	PN	NOAA, Lead, SD	KHSD TV, Lead SD	
KXXL FM	GILLETTE	103.9 MHZ	PN	LP1	NOAA Gillette	
Bresnan	Gillette	Cable	PN	LP1A	LP1	
Bresnan	Moorcroft	Cable	PN	LP1B	LP1	
Bresnan	Upton	Cable	PN	KASL	KGWY FM	
Bresnan	Wright	Cable	PN	LP1	KAML FM	
Bresnan	Newcastle	Cable	PN	KASL	KGWY FM	
Tongue River Cable TV	Hulett, Pine Haven, Osage, Sundance, Midwest, Ranchester/Dayton, Story	Cable	PN	LP1		

### Campbell/Crook/Weston County Local Area

Local Area 6

NOTE: Please contact the Sheriff's Office in order to contact the county Emergency Management Coordinator

County	Authority to Activate	Phone Number
Campbell	Sheriff's Office	(307) 682-7271
Crook	Sheriff's Office	(307) 283-1225
Weston	Sheriff's Office	(307) 746-4444

# WY EAS Area 7



## Fremont County Local Area

Local Area 7

(This Area includes the towns and cities within Fremont County. Lander and Riverton.)

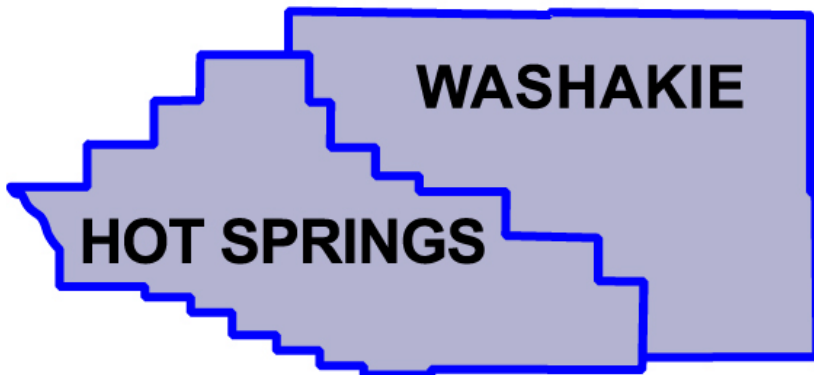
Station	Location	Frequency	EAS Designation	Primary EAS Assignment	Secondary EAS Assignment	Other Assignment
KDLY-FM	LANDER	97.5 MHZ	LP1	NOAA	EOC BY PHONE	KUWR relay
KTRZ-FM	RIVERTON	93.1 MHZ	LP2	LP1	NOAA	
KCWC-TV	LANDER	CH 4	PN	LP1	LP2	NOAA
KGWL-TV	LANDER	CH 5	PN	KTWO AM	NOAA	
KOVE-AM	LANDER	1330 KHZ	PN	LP1	LP2	NOAA
KCWC-FM	RIVERTON	88.1 MHZ	PN	LP1	LP2	NOAA
KFNE-TV	RIVERTON	CH 10	PN	KTWO AM	NOAA	
KTAK-FM	RIVERTON	93.9 MHZ	PN	LP1	LP2	NOAA
KVOW-FM	RIVERTON	1450 KHZ	PN	LP1	LP2	NOAA
Bresnan	RIVERTON	Cable	PN	LP1	LP2	
Bresnan	LANDER	Cable	PN	LP1	LP2	

## Fremont County Local Area

NOTE: Please contact the Sheriff's Office in order to contact the county Emergency Management Coordinator  
Local Area 7

County	Authority to Activate	Phone Number
Fremont	Sheriff's Office	(307) 332-5611

# WY EAS Area 8



## Hot Springs/Washakie County Local Area

Local Area 8

(This Area includes the towns and cities within Hot Springs and Washakie Counties. Thermopolis, Shoshoni, Worland and Greybull.)

Station	Location	Frequency	EAS Designation	Primary EAS Assignment	Secondary EAS Assignment	Other Assignment
KTHE-AM	THERMOPOLIS	1240 KHZ	PN	EOC BY PHONE	NOAA	KUWR
KWYW FM	THERMOPOLIS	99.1 MHZ	PN	EOC BY PHONE	NOAA	KUWR
KDNO FM	THERMOPOLIS	101.7 MHZ	PN	EOC BY PHONE	NOAA	KUWR
KWOR-AM	WORLAND	1340 KHZ	LP1A	KZMQ FM	NOAA	EOC/PHONE
KKLX-FM	WORLAND	96.1 MHZ	LP1	KZMQ FM	NOAA	EOC/PHONE
Bresnan	WORLAND	Cable	PN	KTHE	NOAA	EOC/PHONE
Bresnan	THERMOPOLIS	Cable	PN	KTHE	NOAA	EOC/PHONE

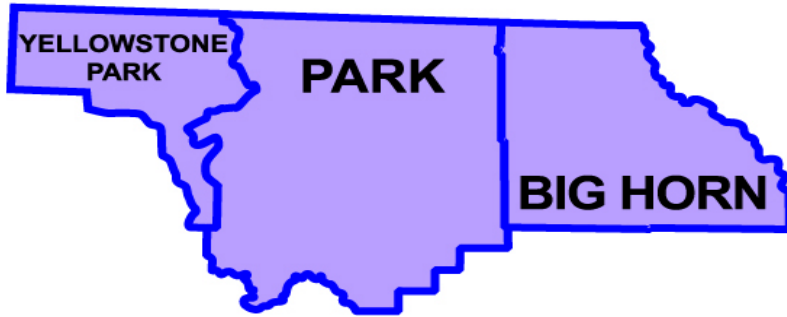
## HOT SPRINGS/WASHAKIE COUNTY LOCAL AREA

### Area 8

NOTE: Please contact the Sheriff's Office in order to contact the county Emergency Management Coordinator

County	Authority to Activate	Phone Number
Hot Springs	Sheriff's Office	(307) 864-2622
Washakie	Sheriff's Office	(307) 347-2242

# WY EAS Area 9



## Park/Big Horn County Local Area

Local Area 9

(This Area includes the towns and cities within Park and Big Horn Counties. Cody, Powell, Lovell, Greybull, Basin and Byron.)

Station	Location	Frequency	EAS Designation	Primary EAS Assignment	Secondary EAS Assignment	Other Assignment
KLZY-FM	POWELL	92.5 MHZ	PN	NOAA	KUWP	
KCGL FM	POWELL	104.1 MHZ	PN	NOAA	LP2	EOC BY PHONE
KODI-AM	CODY	1400 KHZ	PN	NOAA	LP2	EOC BY PHONE
KPOW-AM	POWELL	1260 KHZ	LP2	LP1	NOAA	
KTAG-FM	CODY	97.9 MHZ	PN	NOAA	LP2	EOC BY PHONE
KUWP	POWELL	90.1 MHZ	PN	NOAA	EOC BY PHONE	
KZMQ-AM	GREYBULL	1140 KHZ	PN	NOAA	LP2	EOC BY PHONE
KZMQ-FM	GREYBULL	100.3 MHZ	LP1	NOAA	LP2	EOC BY PHONE
Lovell Cable	LOVELL	Cable	PN	LP1	KUWP	
Bresnan	CODY	Cable	PN	KTAG FM	EOC BY PHONE	
Bresnan	GREYBULL	Cable	PN	LP1	NOAA	
Bresnan	POWELL	Cable	PN	KTAG FM	NOAA	
TCT West	LOVELL BASIN, BYRON, GREYBULL, BASIN, COWLEY, OTTO, SHELL, MANDERSON	Cable	PN	LP1	EOC BY PHONE	

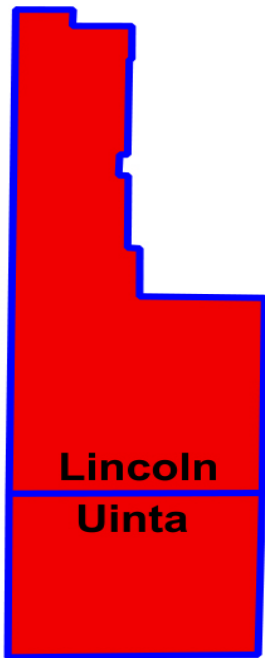
## PARK/BIG HORN COUNTY LOCAL AREA

Local Area 9

NOTE: Please contact the Sheriff's Office in order to contact the county Emergency Management Coordinator

County	Authority to Activate	Phone Number
Park	Sheriff's Office	(307)527-8700
Big Horn	Sheriff's Office	(307) 568-2324 1-800-500-2324

# WY EAS Area 10



## Lincoln/Uinta Local Area

Local Area 10

(This Area includes the towns and cities within Lincoln and Uinta Counties. Evanston, Kemmerer, Afton, Mountain View, and Cokeville.)

Station	Location	Frequency	EAS Designation	Primary EAS Assignment	Secondary EAS Assignment	Other Assignment
KMER-AM	KEMMERER	950 KHZ	PN	LP1	KQSW FM	
KDWY FM	DIAMONDVILLE	105.3 MHZ	PN	LP1	KQSW FM	
KEVA-AM	EVANSTON	1240 KHZ	PN	LP1	KQSW FM	KTVX TV, SLC
KAOX FM	KEMMERER	107.3 MHZ	PN	LP1	KQSW FM	
KUWR	KEMMERER	93.5 MHZ	LP1	*See Area 5		
KOTB-FM	EVANSTON	106.3 MHZ	PN	LP1	KQSW FM	KTVX TV, SLC
KRSV-AM	AFTON	1210 KHZ	PN	KMTN FM	KUWR	NOAA
KNYN FM	EVANSTON	99.1 MHZ	PN	LP1	KQSW FM	KTVX TV, SLC
KRSV-FM	AFTON	100.3 MHZ	PN	KMTN FM	KUWR	NOAA
Adelphia	EVANSTON	Cable	PN	LP1	KQSW FM	
All West Comm.	EVANSTON	Cable	PN	LP1	KQSW FM	
Mallard	KEMMERER AFTON, DIAMONDVILLE	Cable	PN	Not Testing	Not Testing	

## Lincoln/Uinta Local Area

Local Area 10

NOTE: Please contact the Sheriff's Office in order to contact the county Emergency Management Coordinator

County	Authority to Activate	Phone Number
Lincoln	Sheriff's Office	(307) 877-9056
Uinta	Sheriff's Office	(307) 783-1000

# WY EAS Area 11



## Teton Local Area

Local Area 11

(This Area includes the towns and cities within Teton County. Jackson, Wilson, and Moran Junction.)

Station	Location	Frequency	EAS Designation	Primary EAS Assignment	Secondary EAS Assignment	Other Assignment
KZJH-FM	JACKSON	95.3 MHZ	LP1	NOAA/EOC BY PHONE	KUWR	
KJWY-TV	JACKSON	CH 2	PN	LP1	NOAA	
KMTN-FM	JACKSON	96.9 MHZ	PN	LP1	NOAA	
KSGT-AM	JACKSON	1340 KHZ	PN	LP1	NOAA	
KUWJ-FM	JACKSON	90.3 MHZ	PN	LP1	NOAA	
Mallard	BIG PINEY	Cable	PN	LP1	KUWR	

## TETON LOCAL AREA

Area 11

NOTE: Please contact the Sheriff's Office in order to contact the county Emergency Management Coordinator

County	Authority to Activate	Phone Number
Teton	Sheriff's Office	307-733-4052